

Document Number	Document Revision	Document Revision Date	Product Date Code Beginning With
L4206	B	11/2017	A

NOTICE:

Enerpac recommends the installation of all parts included in a service assembly or repair kit to ensure optimum performance of the repaired product.

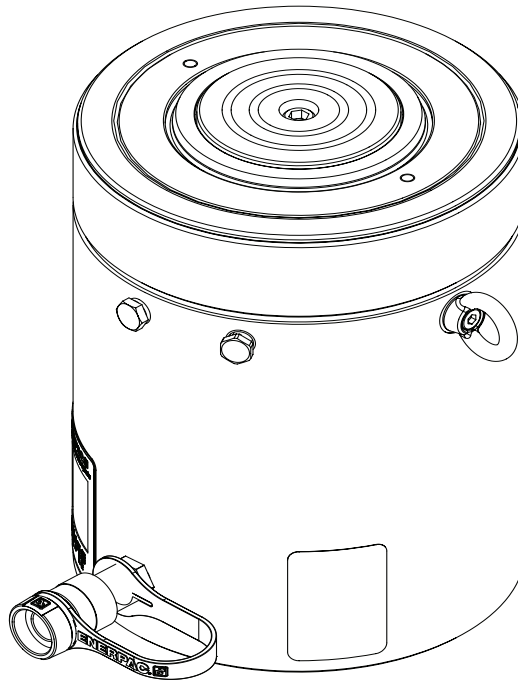
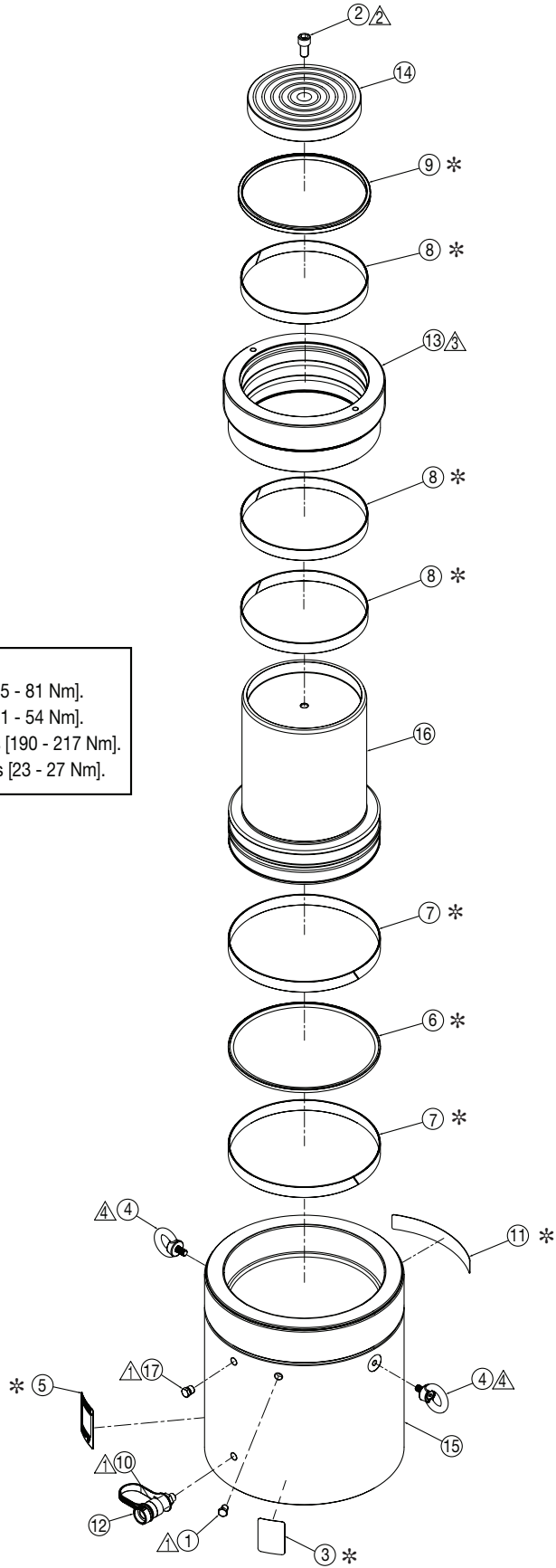


Table of Contents:

	Page		Page
Figure 1, Model HCG-500	2-3	Figure 3, Model HCG-800	6-7
Figure 2, Model HCG-600	4-5	Figure 4, Model HCG-1000	8-9

Figure 1, Exploded View - Model HCG-500

- Notes:**
- ⚠ Torque to 40 - 60 ft-lbs [55 - 81 Nm].
 - ⚠ Torque to 30 - 40 ft-lbs [41 - 54 Nm].
 - ⚠ Torque to 140 - 160 ft-lbs [190 - 217 Nm].
 - ⚠ Torque to 200 - 240 in-lbs [23 - 27 Nm].

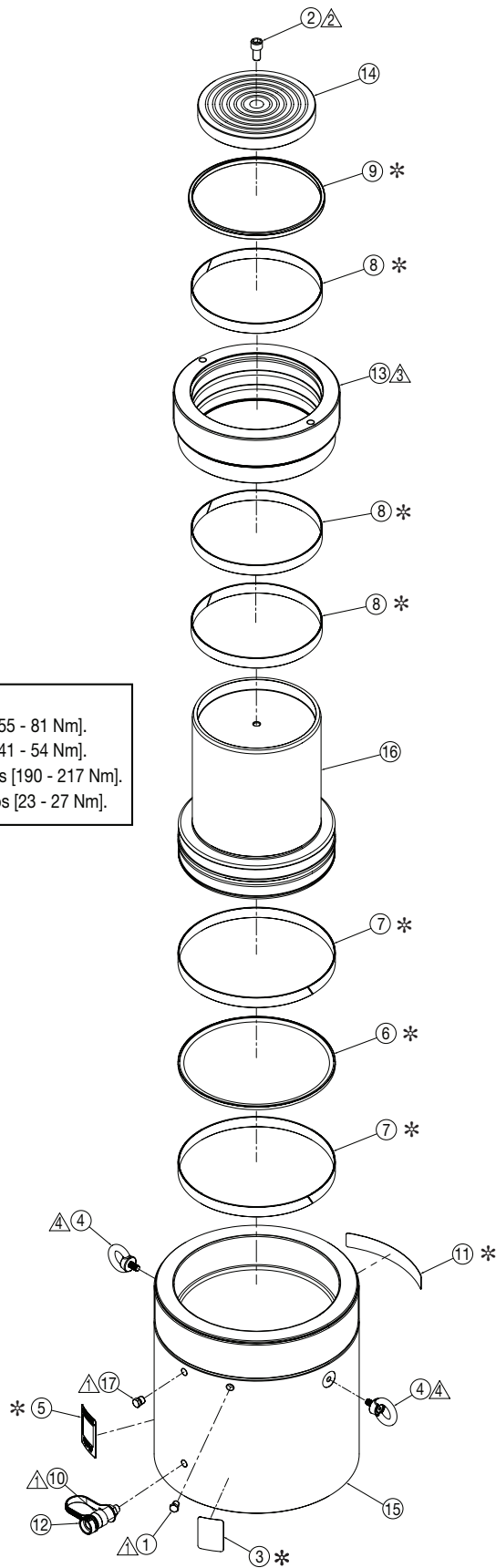


Repair Parts List for Figure 1

Item	Part Number	Qty.	Description
1	BSS6349D	1	Plug
2	CBE1625028-1A	1	Screw, SHC M16 x 30 Zinc
3	* DA5625026	1	Warning Decal, 2.19" x 3.18"
4	DB8086667	2	Eyebolt, Rotating, M12
5	* DB8100026	1	Decal, Product Specification
6	* DB8146076	1	Piston Seal 305 x 284 x 8,1
7	* DB8148155	2	Bearing, Piston 305 x 25
8	* DB8149155	3	Bearing, Rod 250 x 25
9	* DB8150776	1	Wiper 250 mm
10	CR400	1	Female Coupler
11	* DC9596026	1	Decal, Enerpac
12	CD411D	1	Dust Cap
13	HCG5002044	1	Stop Ring HCG 500 Ton
14	HCR500045	1	Saddle HCR 500 Ton
15	N/A	1	Base HCG/HCR 500 Ton 50 mm
	N/A	1	Base HCG/HCR 500 Ton 100 mm
	N/A	1	Base HCG/HCR 500 Ton 150 mm
	N/A	1	Base HCG/HCR 500 Ton 200 mm
	N/A	1	Base HCG/HCR 500 Ton 250 mm
	N/A	1	Base HCG/HCR 500 Ton 300 mm
16	HCR5002040	1	Plunger HCG/HCR 500 Ton 50 mm
	HCR5004040	1	Plunger HCG/HCR 500 Ton 100 mm
	HCR5006040	1	Plunger HCG/HCR 500 Ton 150 mm
	HCR5008040	1	Plunger HCG/HCR 500 Ton 200 mm
	HCR50010040	1	Plunger HCG/HCR 500 Ton 250 mm
	HCR50012040	1	Plunger HCG/HCR 500 Ton 300 mm
17	R515245-2	1	Plug
* Included in HCG500K Seal Kit. N/A - Not Available.			

Figure 2, Exploded View - Model HCG-600

- Notes:**
- ▲ Torque to 40 - 60 ft-lbs [55 - 81 Nm].
 - ▲ Torque to 30 - 40 ft-lbs [41 - 54 Nm].
 - ▲ Torque to 140 - 160 ft-lbs [190 - 217 Nm].
 - ▲ Torque to 200 - 240 in-lbs [23 - 27 Nm].



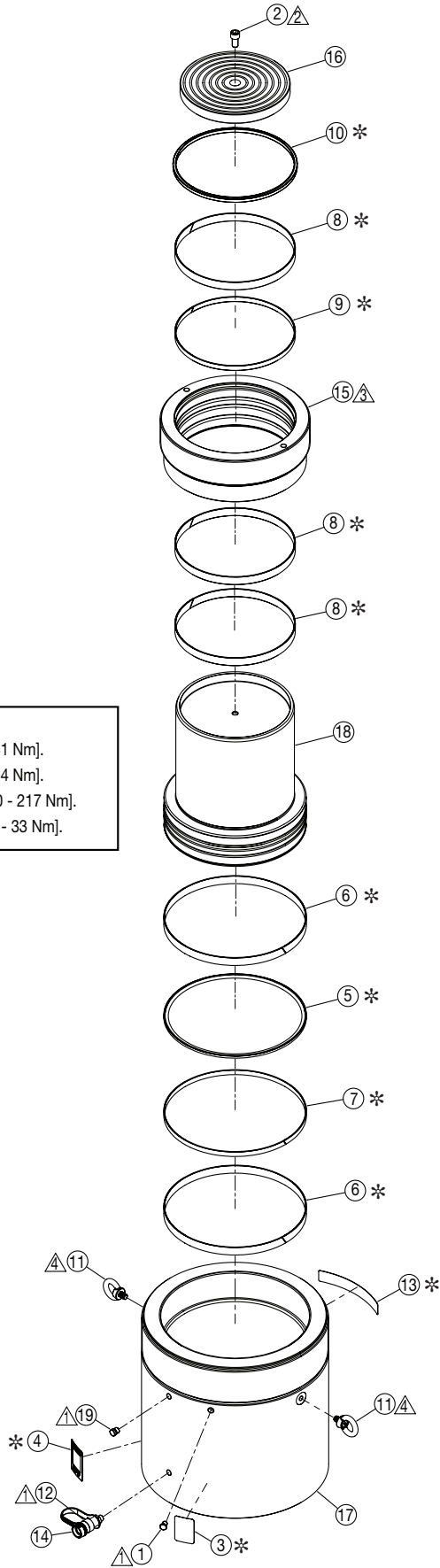
Repair Parts List for Figure 2

Item	Part Number	Qty.	Description
1	BSS6349D	1	Plug
2	CBE1625028-1A	1	Screw, SHC M16 x 30 Zinc
3	* DA5625026	1	Warning Decal, 2.19" x 3.18"
4	DB8086667	2	Eyebolt, Rotating, M12
5	* DB8100026	1	Decal, Product Specification
6	* DB8151076	1	Piston Seal 330 x 305,5 x 8,1
7	* DB8153155	2	Bearing, Piston 330 x 25
8	* DB8154155	3	Bearing, Rod 270 x 25
9	* DB8155776	1	Wiper 270 mm
10	CR400	1	Female Coupler
11	* DC9596026	1	Decal, Enerpac
12	CD411D	1	Dust Cap
13	HCG6002044	1	Stop Ring HCG 600 Ton
14	HCR600045	1	Saddle HCR 600 Ton
15	N/A	1	Base HCG/HCR 600 Ton 50 mm
	N/A	1	Base HCG/HCR 600 Ton 100 mm
	N/A	1	Base HCG/HCR 600 Ton 150 mm
	N/A	1	Base HCG/HCR 600 Ton 200 mm
	N/A	1	Base HCG/HCR 600 Ton 250 mm
	N/A	1	Base HCG/HCR 600 Ton 300 mm
16	HCR6002040	1	Plunger HCG/HCR 600 Ton 50 mm
	HCR6004040	1	Plunger HCG/HCR 600 Ton 100 mm
	HCR6006040	1	Plunger HCG/HCR 600 Ton 150 mm
	HCR6008040	1	Plunger HCG/HCR 600 Ton 200 mm
	HCR60010040	1	Plunger HCG/HCR 600 Ton 250 mm
	HCR60012040	1	Plunger HCG/HCR 600 Ton 300 mm
17	R515245-2	1	Plug
* Included in HCG600K Seal Kit. N/A - Not Available.			

Figure 3, Exploded View - Model HCG-800

Notes:

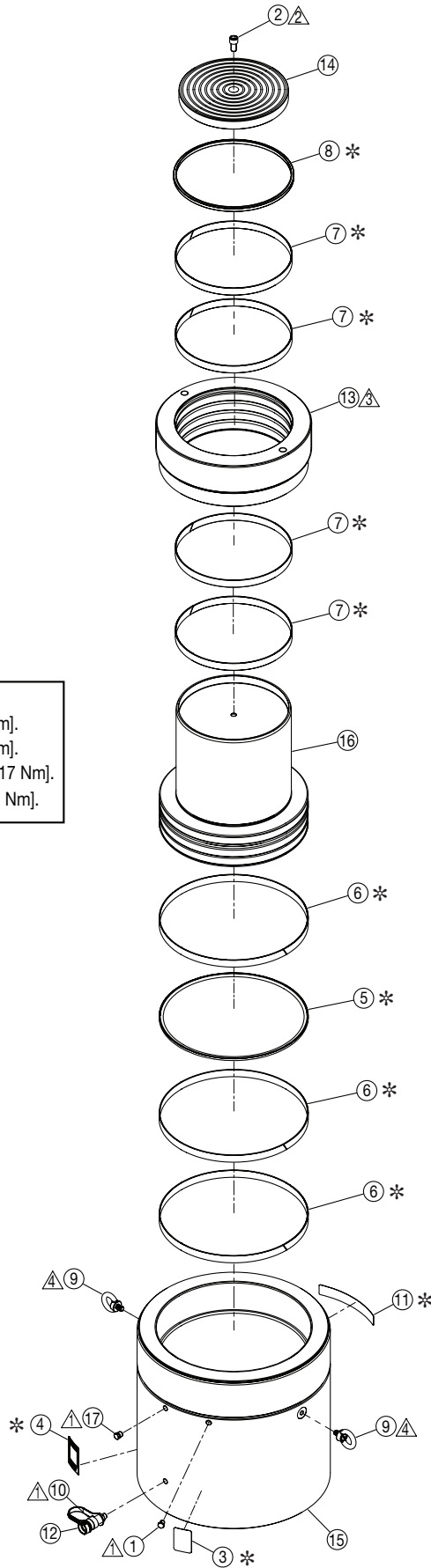
- ⚠ Torque to 40 - 60 ft-lbs [55 - 81 Nm].
- ⚠ Torque to 30 - 40 ft-lbs [41 - 54 Nm].
- ⚠ Torque to 140 - 160 ft-lbs [190 - 217 Nm].
- ⚠ Torque to 240 - 290 in-lbs [27 - 33 Nm].



Repair Parts List for Figure 3

Item	Part Number	Qty.	Description
1	BSS6349D	1	Plug
2	CBE1625028-1A	1	Screw, SHC M16 x 30 Zinc
3	* DA5625026	1	Warning Decal, 2.19" x 3.18"
4	* DB8100026	1	Decal, Product Specification
5	* DB8156076	1	Piston Seal 385 x 360,5 x 8,1
6	* DB8158155	2	Bearing, Piston 385 x 25
7	* DB8159155	1	Bearing, Piston 380 x 25
8	* DB8160155	3	Bearing, Rod 320 x 25
9	* DB8161155	1	Bearing, Rod 320 x 15
10	* DB8162776	1	Wiper 320 mm
11	DB8168667	2	Eyebolt, Rotating, M14
12	CR400	1	Female Coupler
13	* DC9596026	1	Decal, Enerpac
14	CD411D	1	Dust Cap
15	HCG8002044	1	Stop Ring HCG 800 Ton
16	HCR800045	1	Saddle HCR 800 Ton
17	N/A	1	Base HCG/HCR 800 Ton 50 mm
	N/A	1	Base HCG/HCR 800 Ton 100 mm
	N/A	1	Base HCG/HCR 800 Ton 150 mm
	N/A	1	Base HCG/HCR 800 Ton 200 mm
	N/A	1	Base HCG/HCR 800 Ton 250 mm
	N/A	1	Base HCG/HCR 800 Ton 300 mm
18	HCR8002040	1	Plunger HCG/HCR 800 Ton 50 mm
	HCR8004040	1	Plunger HCG/HCR 800 Ton 100 mm
	HCR8006040	1	Plunger HCG/HCR 800 Ton 150 mm
	HCR8008040	1	Plunger HCG/HCR 800 Ton 200 mm
	HCR80010040	1	Plunger HCG/HCR 800 Ton 250 mm
	HCR80012040	1	Plunger HCG/HCR 800 Ton 300 mm
19	R515245-2	1	Plug
* Included in HCG800K Seal Kit. N/A - Not Available.			

Figure 4, Exploded View - Model HCG-1000



- Notes:**
- △1 Torque to 40 - 60 ft-lbs [55 - 81 Nm].
 - △2 Torque to 30 - 40 ft-lbs [41 - 54 Nm].
 - △3 Torque to 140 - 160 ft-lbs [190 - 217 Nm].
 - △4 Torque to 240 - 290 in-lbs [27 - 33 Nm].

Repair Parts List for Figure 4

Item	Part Number	Qty.	Description
1	BSS6349D	1	Plug
2	CBE1625028-1A	1	Screw, SHC M16 x 30 Zinc
3	* DA5625026	1	Warning Decal, 2.19" x 3.18"
4	* DB8100026	1	Decal, Product Specification
5	* DB8163076	1	Piston Seal 440 x 415,5 x 8,1
6	* DB8165155	3	Bearing, Piston 440 x 25
7	* DB8166155	4	Bearing, Rod 340 x 25
8	* DB8167776	1	Wiper 340 mm
9	DB8168667	2	Eyebolt, Rotating, M14
10	CR400	1	Female Coupler
11	* DC9596026	1	Decal, Enerpac
12	CD411D	1	Dust Cap
13	HCG10002044	1	Stop Ring HCG 1000 Ton
14	HCR1000045	1	Saddle HCR 1000 Ton
15	N/A	1	Base HCG/HCR 1000 Ton 50 mm
	N/A	1	Base HCG/HCR 1000 Ton 100 mm
	N/A	1	Base HCG/HCR 1000 Ton 150 mm
	N/A	1	Base HCG/HCR 1000 Ton 200 mm
	N/A	1	Base HCG/HCR 1000 Ton 250 mm
	N/A	1	Base HCG/HCR 1000 Ton 300 mm
16	HCR10002040	1	Plunger HCG/HCR 1000 Ton 50 mm
	HCR10004040	1	Plunger HCG/HCR 1000 Ton 100 mm
	HCR10006040	1	Plunger HCG/HCR 1000 Ton 150 mm
	HCR10008040	1	Plunger HCG/HCR 1000 Ton 200 mm
	HCR100010040	1	Plunger HCG/HCR 1000 Ton 250 mm
	HCR100012040	1	Plunger HCG/HCR 1000 Ton 300 mm
17	R515245-2	1	Plug
* Included in HCG1000K Seal Kit. N/A - Not Available.			

