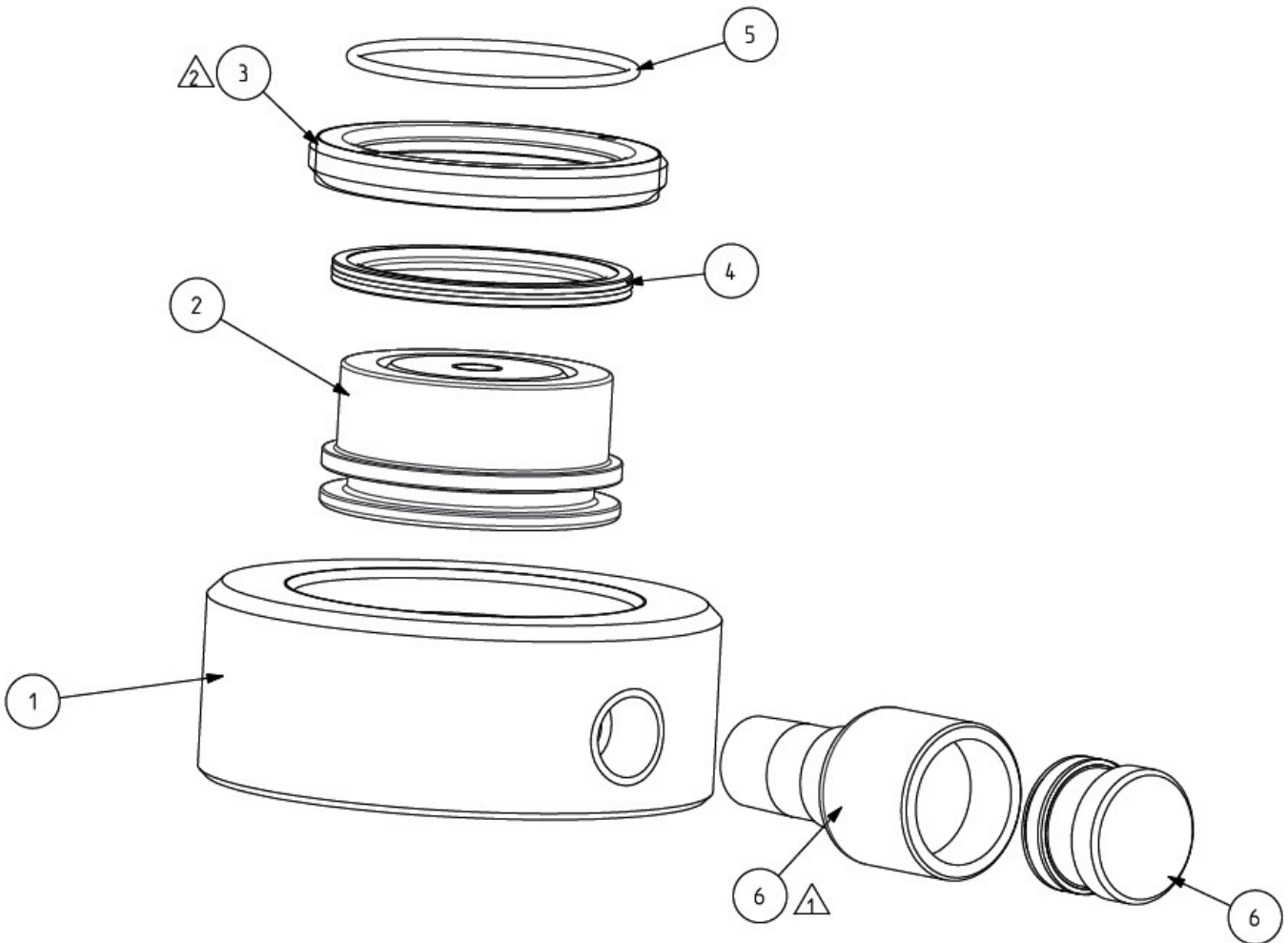



To Protect Your Warranty, Use Only ENERPAC Hydraulic Oil.

Enerpac recommends that all kit components be installed to insure optimum performance of the repaired unit.

Note: Apply Loctite 545 thread sealant to mating threads of items 1 and 6.



NOTES:

 TORQUE TO 23-28 FT-LBS [32-38 Nm].

 TORQUE TO 140-160 FT-LBS [190-217 Nm]

Repair parts list for CULP-Series cylinders, models CULP10 through CULP50						
Item	Description	Qty.	Part Number	Part Number	Part Number	Part Number
			CULP10	CULP20	CULP30	CULP50
1	CYLINDER BASE	1	B170042030-13	B170042030-14	B170042030-15	B170042030-1
2	PLUNGER	1	B170042040-13	B170042040-14	B170042040-15	B170042040-1
3	STOP RING	1	B170042044-13	B170042044-14	B170042044-15	B170042044-1
4	PISTON SEAL	1	*	*	*	*
5	O-RING	1	*	*	*	*
6	FEMALE COUPLER	1	AR630	AR630	AR630	AR630
7	WARNING DECAL (NOT SHOWN)	1	*CH272026	*CH272026	*CH272026	*CH272026
8	ENERPAC DECAL (NOT SHOWN)	1	*DB8172026	*DB8172026	*DB8172026	*DB8175026
9	COUPLER O-RING (NOT SHOWN)	1	*	*	*	*
*INDICATES PARTS INCLUDED IN THE SERVICE KIT LISTED BELOW:						
SERVICE KIT			CULP10K	CULP20K	CULP30K	CULP50K