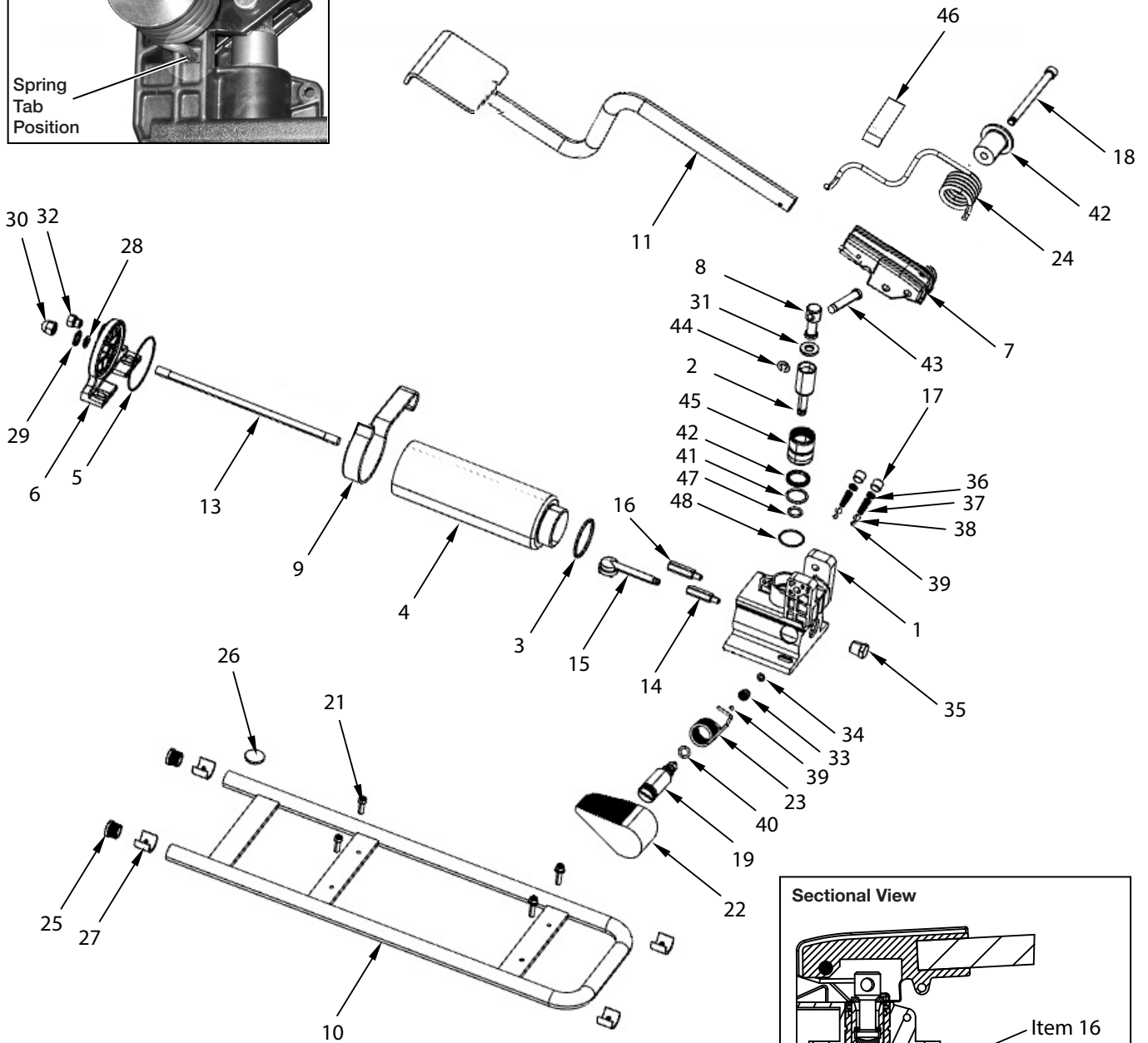
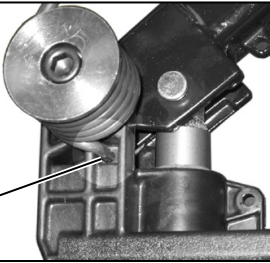


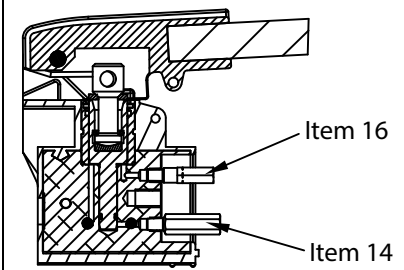
Document Number	Revision	Revision Date	Product Date Code Beginning With
L2694	Rev. G	01/2023	A

Item 24:

Spring Tab Position



Sectional View



Repair Parts List for Model P-392FP, Date Code "A" (Refer to Figure on Page 1)

Item	Part Number	Qty.	Description	Item	Part Number	Qty.	Description
1	N/A	1	Base	26	DC6649108	1	Pad, Rubber
2	DA4892051	1	Pump Plunger	27	DC6644885	4	Foot, Rubber
3	■	1	Gasket	28	■	1	O-Ring
4	DA10945025	1	Reservoir, Yellow	29	■	1	Washer
5	■	1	O-Ring	30	CL341055	1	Nut, Acorn
6	DC362020	1	End Cap	31	DA4896446	1	Sleeve Protector
7	N/A	1	Beam ❖	32	B1018006	1	Plug
8	DA4893062	1	Piston Link	33	DD6467290	1	Ball Seat
9	P392FP104	1	Handle Retainer	34	DA9355167	1	Gasket
10	DC6643101	1	Frame	35	R515245-2	1	Plug
11	DC6646103	1	Pedal and Handle Assy.	36	■	2	Spring Cap
12	■	2	Decal Enerpac (not shown)	37	■	2	Spring
13	DC1017149	1	Tie Rod	38	■	2	Ball, 5/16"
14	DA8802900SR	1	Relief Valve	39	■	3	Ball, 7/32"
15	DA3729900	1	Oil Filter	40	■	1	O-Ring
16	DA5493900SR	1	Bypass Valve	41	■	1	O-Ring
17	CN815006	2	Pipe Plug	42	DC7364776	1	Wiper
18	■	1	Beam Pin	43	DC106061	1	Cross Pin
19	U170152010	1	Valve Spindle	44	■	1	Retaining Ring
21	B1007028	4	Capscrew	45	DC7363225	1	Insert
22	DA10955218	1	Foot Pedal	46	DA7570217	1	Cord Strap
23	■	1	Torsion Spring	47	B1113903	1	O-Ring Round
24	■	1	Return Spring	48	B1231503	1	O-Ring Round
25	DC6645886	2	Plug, Plastic				

■ Items included as part of Repair Kit P392FPK1.

❖ Beam included only with item #11 (Not sold separately).



Notes	
14	Set relief valve at 700 bar [10,000 psi] max. Torque to 14-16 Nm [10-12 Ft. lbs]
16	Set by-pass valve to 14-19 bar [200-275 psi] max. Torque to 14-16 Nm [10-12 Ft. lbs]
30	Torque to 20 Nm [15 Ft. lbs]
33	Lubricate and torque to 18-20 lb-ft [24-27 Nm]



www.enerpac.com