

Document Number	Document Revision	Document Revision Date	Product Date Code Beginning With
L4204	B	11/2017	A

NOTICE:

Enerpac recommends the installation of all parts included in a service assembly or repair kit to ensure optimum performance of the repaired product.

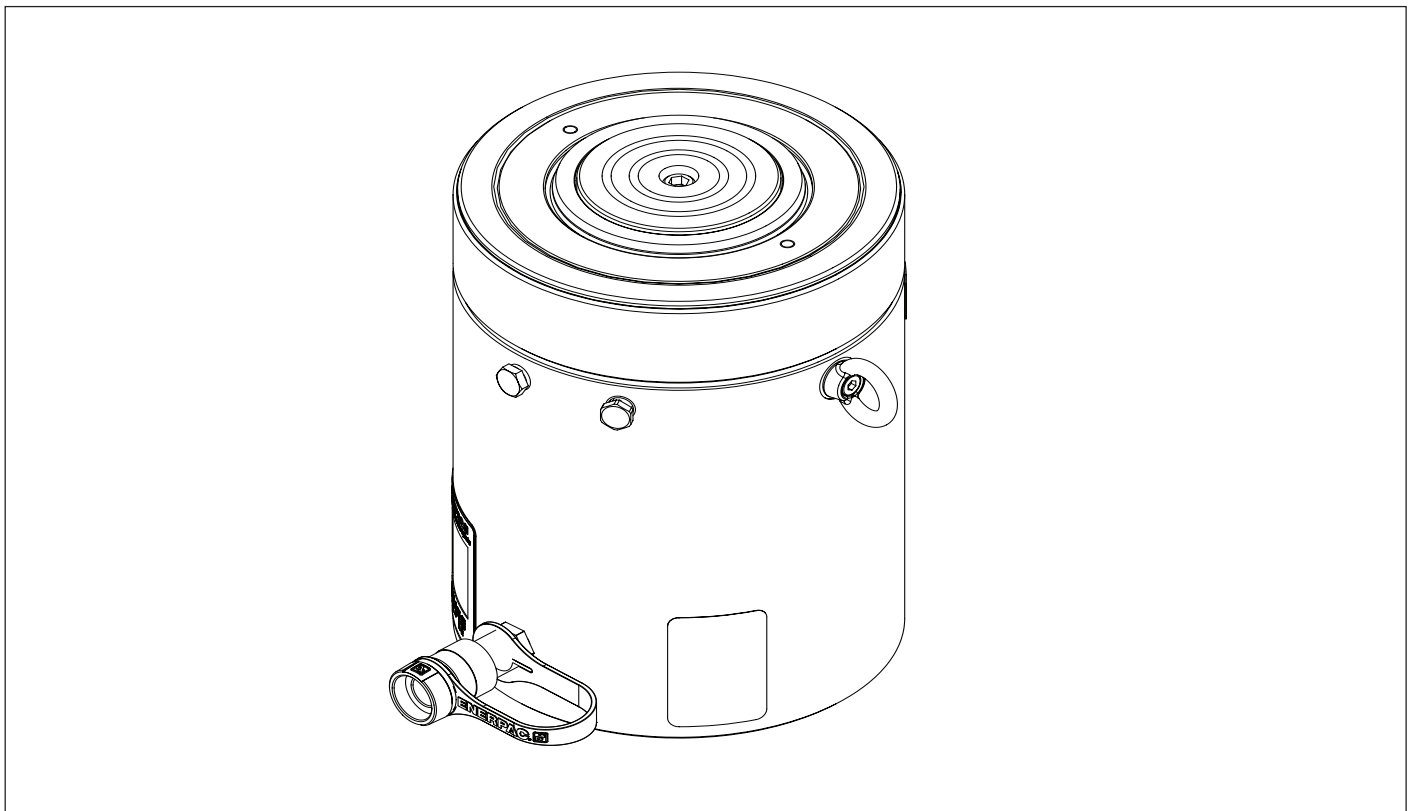
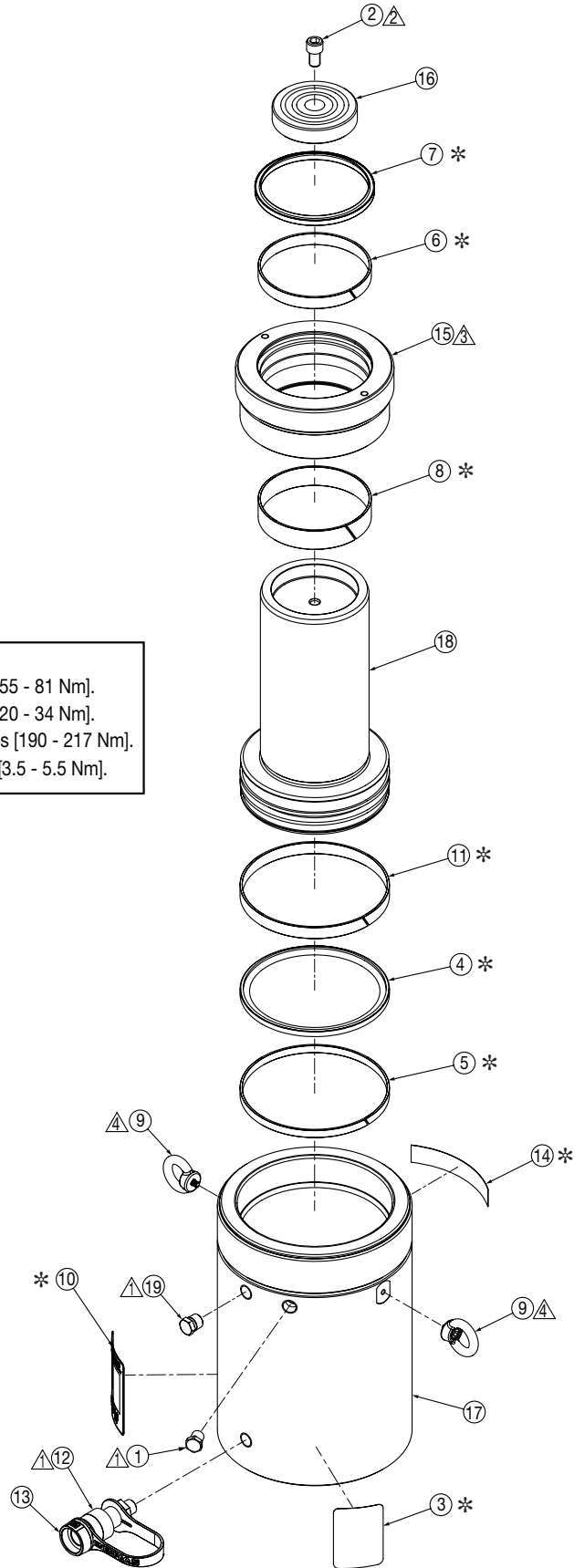


Table of Contents:

	Page		Page
Figure 1, Model HCG-150 Short	2-3	Figure 3, Model HCG-200 Short	6-7
Figure 2, Model HCG-150 Tall	4-5	Figure 4, Model HCG-200 Tall	8-9

Figure 1, Exploded View - Model HCG-150 Short

- Notes:**
- ① Torque to 40 - 60 ft-lbs [55 - 81 Nm].
 - ② Torque to 15 - 25 ft-lbs [20 - 34 Nm].
 - ③ Torque to 140 - 160 ft-lbs [190 - 217 Nm].
 - ④ Torque to 40 - 50 in-lbs [3.5 - 5.5 Nm].



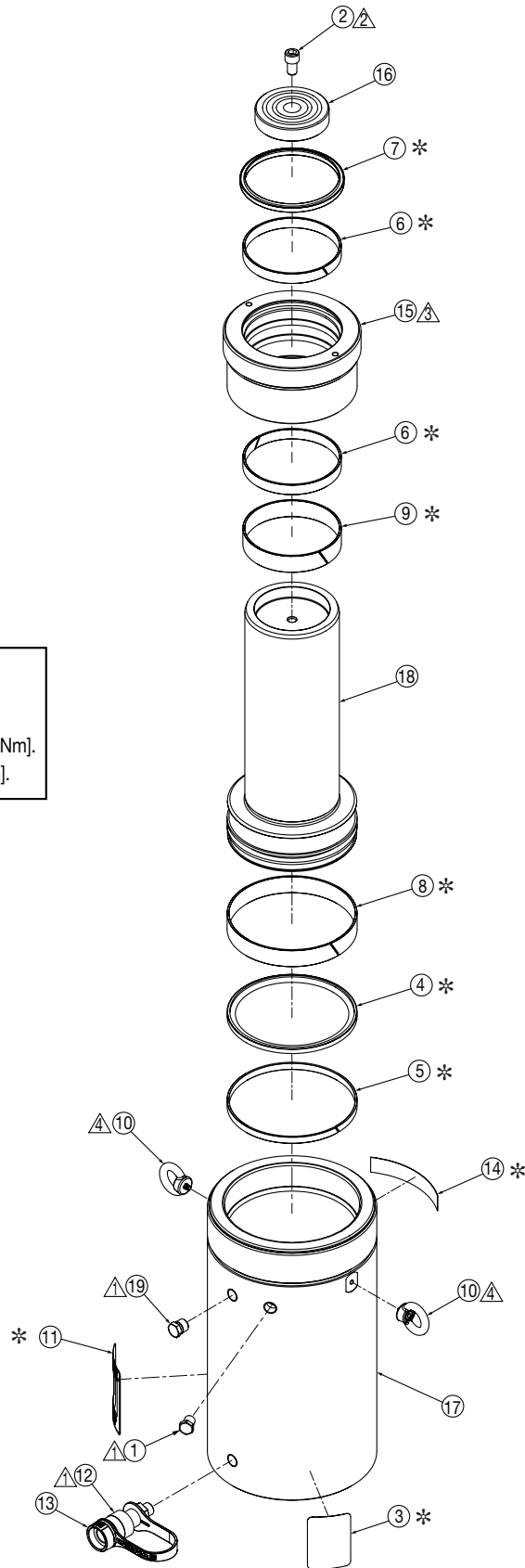
Repair Parts List for Figure 1

Item	Part Number	Qty.	Description
1	BSS6349D	1	Plug
2	CBE1221028-1A	1	M12 x 20 Long SHCS
3	* DA5625026	1	Warning Decal, 2.19" x 3.18"
4	* DB8064076	1	Piston Seal 165 x 144 x 8,1
5	* DB8066155	1	Bearing, Piston 165 x 9,7
6	* DB8068155	1	Bearing, Rod 120 x 15
7	* DB8069776	1	Wiper 120 mm
8	* DB8071155	1	Bearing, Rod 120 x 25
9	DB8099667	2	Eyebolt, Rotating, M6
10	* DB8100026	1	Decal, Product Specification
11	* DB8170155	1	Bearing, Piston 165 x 15
12	CR400	1	Female Coupler
13	CD411D	1	Dust Cap
14	* DD2459026	1	Decal, Enerpac
15	HCG1502044	1	Stop Ring HCG 150 Ton Short
16	HCR150045	1	Saddle HCR 150 Ton
17	N/A	1	Base HCG/HCR 150 Ton 50 mm
	N/A	1	Base HCG/HCR 150 Ton 100 mm
	N/A	1	Base HCG/HCR 150 Ton 150 mm
18	HCR1502040	1	Plunger HCG/HCR 150 Ton 50 mm
	HCR1504040	1	Plunger HCG/HCR 150 Ton 100 mm
	HCR1506040	1	Plunger HCG/HCR 150 Ton 150 mm
19	R515245-2	1	Plug

* Included in HCG150K1 Seal Kit. N/A - Not Available

Figure 2, Exploded View - Model HCG-150 Tall

- Notes:**
- △ Torque to 40 - 60 ft-lbs [55 - 81 Nm].
 - ② Torque to 15 - 25 ft-lbs [20 - 34 Nm].
 - ③ Torque to 140 - 160 ft-lbs [190 - 217 Nm].
 - ④ Torque to 40 - 50 in-lbs [3.5 - 5.5 Nm].

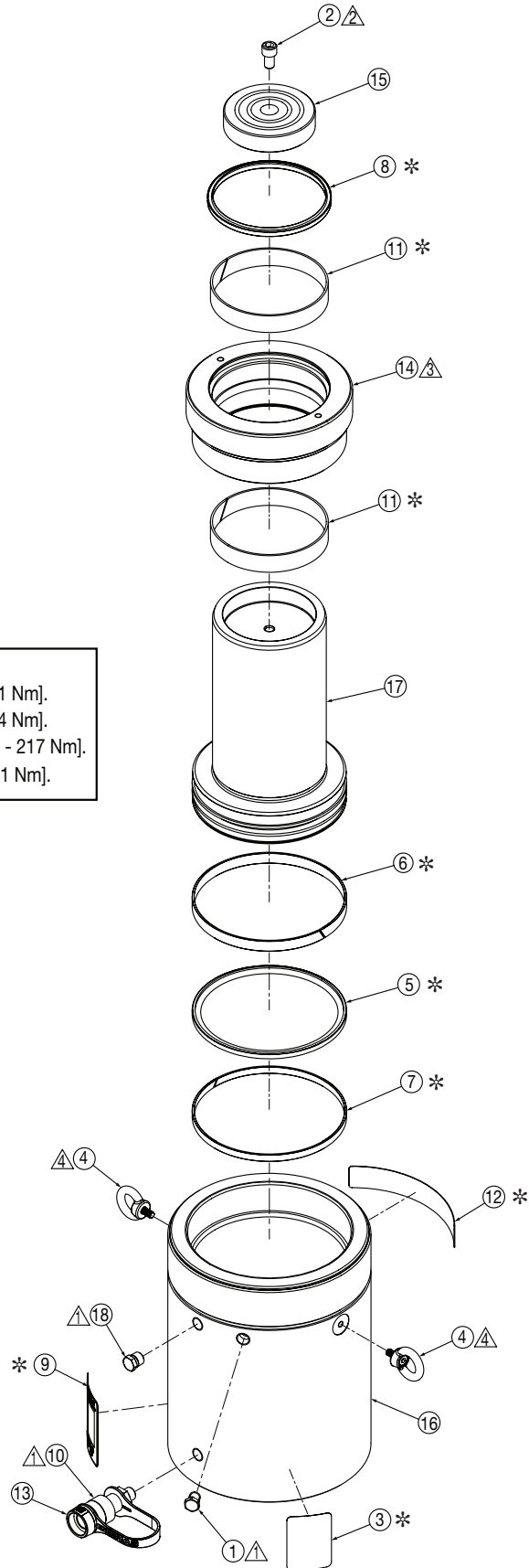


Repair Parts List for Figure 2

Item	Part Number	Qty.	Description
1	BSS6349D	1	Plug
2	CBE1221028-1A	1	M12 x 20 Long SHCS
3	* DA5625026	1	Warning Decal, 2.19" x 3.18"
4	* DB8064076	1	Piston Seal 165 x 144 x 8,1
5	* DB8066155	1	Bearing, Piston 165 x 9,7
6	* DB8068155	2	Bearing, Rod 120 x 15
7	* DB8069776	1	Wiper 120 mm
8	* DB8070155	1	Bearing, Piston 165 x 25
9	* DB8071155	1	Bearing, Rod 120 x 25
10	DB8099667	2	Eyebolt, Rotating, M6
11	* DB8100026	1	Decal, Product Specification
12	CR400	1	Female Coupler
13	CD411D	1	Dust Cap
14	* DD2459026	1	Decal, Enerpac
15	HCG1508044	1	Stop Ring HCG 150 Ton Tall
16	HCR150045	1	Saddle HCR 150 Ton
17	N/A	1	Base HCG/HCR 150 Ton 200 mm
	N/A	1	Base HCG/HCR 150 Ton 250 mm
	N/A	1	Base HCG/HCR 150 Ton 300 mm
18	HCR1508040	1	Plunger HCG/HCR 150 Ton 200 mm
	HCR15010040	1	Plunger HCG/HCR 150 Ton 250 mm
	HCR15012040	1	Plunger HCG/HCR 150 Ton 300 mm
19	R515245-2	1	Plug
* Included in HCG150K2 Seal Kit. N/A - Not Available			

Figure 3, Exploded View - Model HCG-200 Short

- Notes:**
- ⚠ Torque to 40 - 60 ft-lbs [55 - 81 Nm].
 - ⚠ Torque to 15 - 25 ft-lbs [20 - 34 Nm].
 - ⚠ Torque to 140 - 160 ft-lbs [190 - 217 Nm].
 - ⚠ Torque to 80 - 100 in-lbs [9 - 11 Nm].

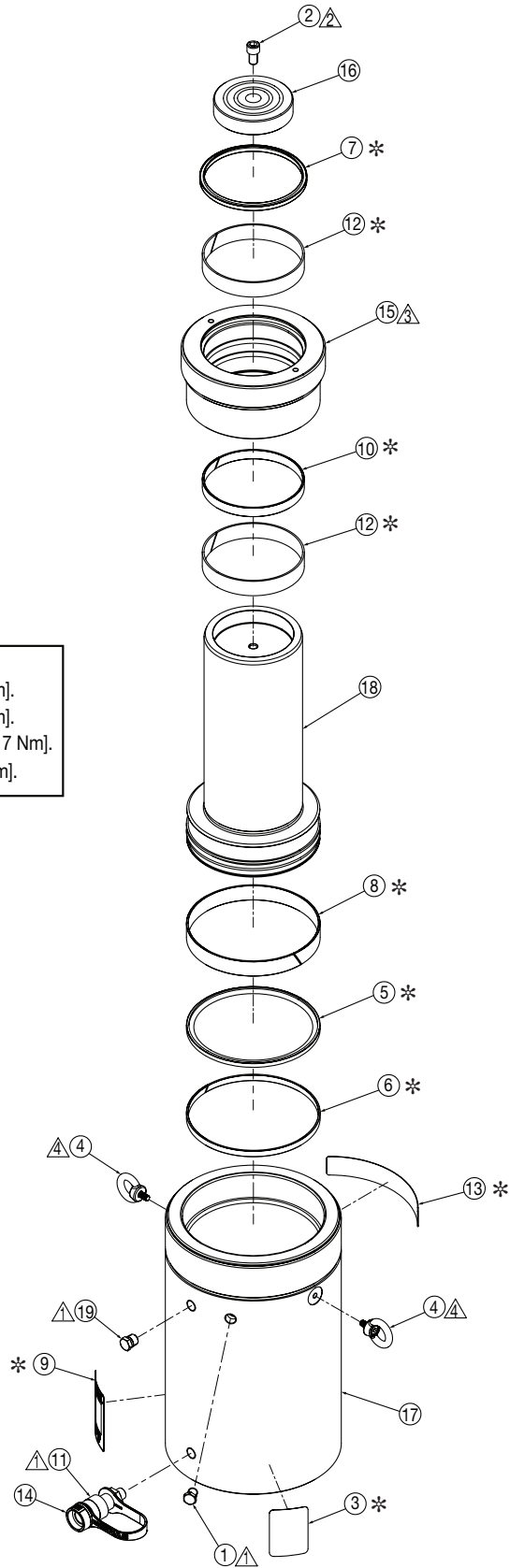


Repair Parts List for Figure 3

Item	Part Number	Qty.	Description
1	BSS6349D	1	Plug
2	CBE1221028-1A	1	M12 x 20 Long SHCS
3	* DA5625026	1	Warning Decal, 2.19" x 3.18"
4	DB8050667	2	Eyebolt, Rotating, M8
5	* DB8072076	1	Piston Seal 190 x 169 x 8,1
6	* DB8074155	1	Bearing, Piston 190 x 15
7	* DB8075155	1	Bearing, Piston 190 x 9,7
8	* DB8077776	1	Wiper 140 mm
9	* DB8100026	1	Decal, Product Specification
10	CR400	1	Female Coupler
11	* DC5442155	2	Rod Wear Ring RAC150
12	* DD1042026	1	Decal, Enerpac
13	CD411D	1	Dust Cap
14	HCG2002044	1	Stop Ring HCG 200 Ton Short
15	HCR200045	1	Saddle HCR 200 Ton
16	N/A	1	Base HCG/HCR 200 Ton 50 mm
	N/A	1	Base HCG/HCR 200 Ton 100 mm
	N/A	1	Base HCG/HCR 200 Ton 150 mm
17	HCR2002040	1	Plunger HCG/HCR 200 Ton 50 mm
	HCR2004040	1	Plunger HCG/HCR 200 Ton 100 mm
	HCR2006040	1	Plunger HCG/HCR 200 Ton 150 mm
18	R515245-2	1	Plug
* Included in HCG200K1 Seal Kit. N/A - Not Available			

Figure 4, Exploded View - Model HCG-200 Tall

- Notes:**
- ⚠ Torque to 40 - 60 ft-lbs [55 - 81 Nm].
 - ⚠ Torque to 15 - 25 ft-lbs [20 - 34 Nm].
 - ⚠ Torque to 140 - 160 ft-lbs [190 - 217 Nm].
 - ⚠ Torque to 80 - 100 in-lbs [9 - 11 Nm].



Repair Parts List for Figure 4			
Item	Part Number	Qty.	Description
1	BSS6349D	1	Plug
2	CBE1221028-1A	1	M12 x 20 Long SHCS
3	* DA5625026	1	Warning Decal, 2.19" x 3.18"
4	DB8050667	2	Eyebolt, Rotating, M8
5	* DB8072076	1	Piston Seal 190 x 169 x 8,1
6	* DB8075155	1	Bearing, Piston 190 x 9,7
7	* DB8077776	1	Wiper 140 mm
8	* DB8078155	1	Bearing, Piston 190 x 25
9	* DB8100026	1	Decal, Product Specification
10	* DB8178155	1	Bearing, Rod 140 x 15
11	CR400	1	Female Coupler
12	* DC5442155	2	Rod Wear Ring RAC150
13	* DD1042026	1	Decal, Enerpac
14	CD411D	1	Dust Cap
15	HCG2008044	1	Stop Ring HCG 200 Ton Tall
16	HCR200045	1	Saddle HCR 200 Ton
17	N/A	1	Base HCG/HCR 200 Ton 200 mm
	N/A	1	Base HCG/HCR 200 Ton 250 mm
	N/A	1	Base HCG/HCR 200 Ton 300 mm
18	HCR2008040	1	Plunger HCG/HCR 200 Ton 200 mm
	HCR20010040	1	Plunger HCG/HCR 200 Ton 250 mm
	HCR20012040	1	Plunger HCG/HCR 200 Ton 300 mm
19	R515245-2	1	Plug
* Included in HCG200K2 Seal Kit. N/A - Not Available			

