

Document Number	Revision	Revision Date	Product Date Code Beginning With
L4522	Rev. A	11/2020	A

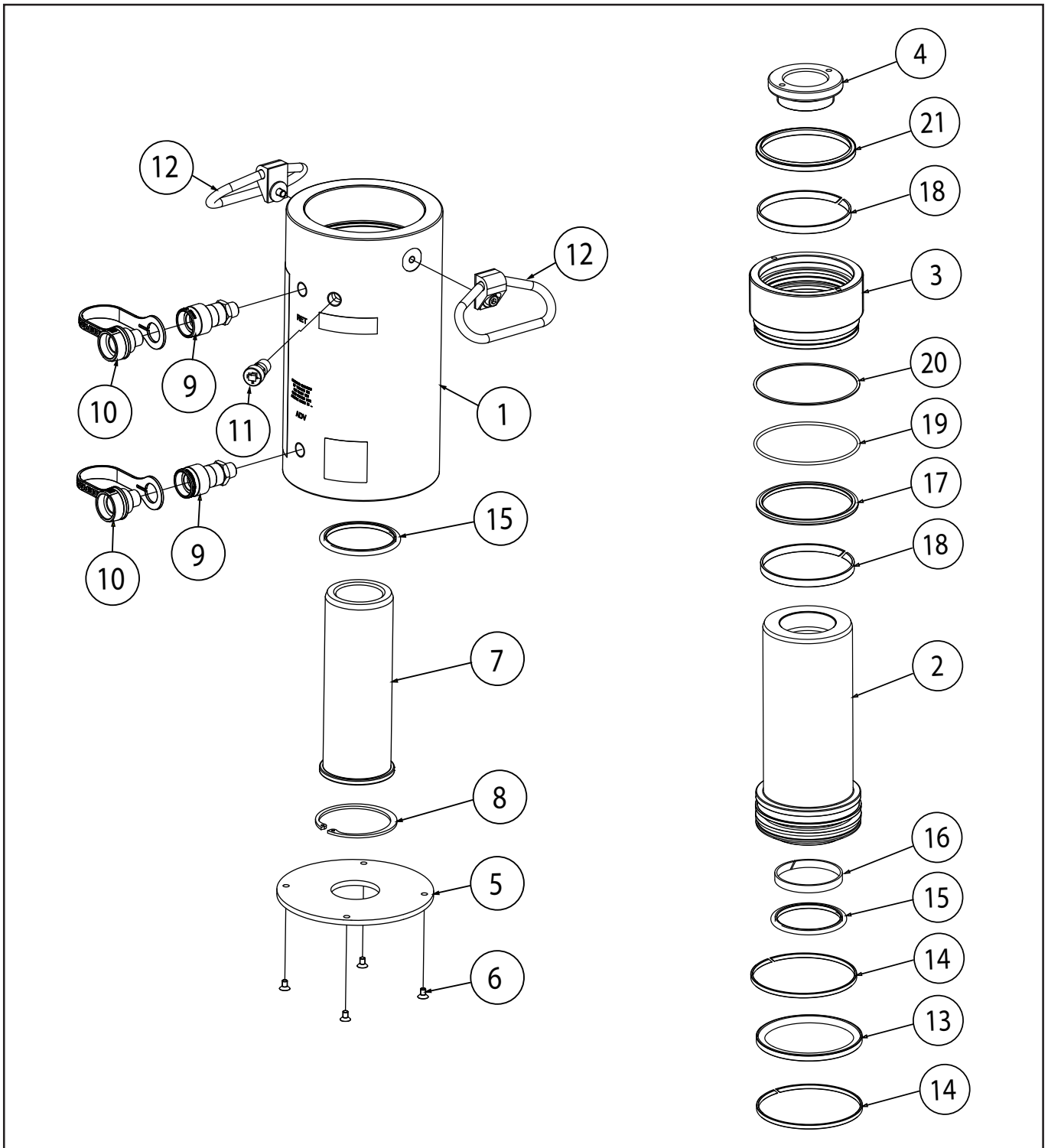


Figure 1, RARH Aluminum Cylinder, 100 and 150 Ton

### Repair Parts List RARH 100 - Figure 1

Item	Description	Qty	RARH1002	RARH1006	RARH10010
1	Base	1	N/A	N/A	N/A
2	Plunger	1	N/A	N/A	N/A
3	Stop Ring	1	RARH100044	RARH100044	RARH100044
4	Saddle	1	RARH100045	RARH100045	RARH100045
5	Protector Plate	1	RARH100101	RARH100101	RARH100101
6	Screw-FHS	4	▲	▲	▲
7	Center Tube	1	RARH1002005	RARH1006005	RARH10010005
8	Retaining Ring	1	▲	▲	▲
9	Female Coupler	2	DC1389900	DC1389900	DC1389900
10	Dust Cap	2	▲	▲	▲
11	Relief Valve	1	CJ160900W	CJ160900W	CJ160900W
12	Handle	2	CHM8	CHM8	CHM8
13	Piston Seal	1	▲	▲	▲
14	Bearing	2	▲	▲	▲
15	Rod Seal	2	▲	▲	▲
16	Glide Ring-rod	1	▲	▲	▲
17	Rod Seal	1	▲	▲	▲
18	Glide Ring-rod	2	▲	▲	▲
19	O-ring	1	▲	▲	▲
20	Backup	1	▲	▲	▲
21	Scraper	1	▲	▲	▲
22	O-ring, coupler (not shown)	2	▲	▲	▲
23	Enerpac Decal (not shown)	1	▲	▲	▲
24	Warning Decal (not shown)	1	▲	▲	▲
25	Decal Product Specification (not shown)	1	▲	▲	▲

**Notes:**

▲ Indicated item included in and available only as a part of the Repair Kit RARH100K50



Item nr.	Torque/ remark
9 and 11	Torque to 75 ft-lbs min [103 Nm]
12	Torque to 80-100 in-lbs [9-11 Nm]
6	Torque to 10-20 in-lbs [14-27 Nm]
3	Torque to 15-25 in-lbs [21-34 Nm]
12	Secure with Loctitte 271
3	Secure with Loctitte 222 PER EES 115-16

### Repair Parts List RARH 150 - Figure 1

Item	Description	Qty	RARH1502	RARH1506	RARH15010
1	Base	1	N/A	N/A	N/A
2	Plunger	1	N/A	N/A	N/A
3	Stop Ring	1	RARH150044	RARH150044	RARH150044
4	Saddle	1	RARH150045	RARH150045	RARH150045
5	Protector Plate	1	RARH150101	RARH150101	RARH150101
6	Screw-FHS	4	■	■	■
7	Center Tube	1	RARH1002005	RARH1006005	RARH10010005
8	Retaining Ring	1	■	■	■
9	Female Coupler	2	DC1389900	DC1389900	DC1389900
10	Dust Cap	2	■	■	■
11	Relief Valve	1	CJ160900W	CJ160900W	CJ160900W
12	Handle	2	CHM8	CHM8	CHM8
13	Piston Seal	1	■	■	■
14	Glide Ring-piston	2	■	■	■
15	Rod Seal	2	■	■	■
16	Glide Ring-rod	1	■	■	■
17	Rod Seal	1	■	■	■
18	Glide Ring-rod	2	■	■	■
19	O-ring	1	■	■	■
20	Backup	1	■	■	■
21	Rod Wiper	1	■	■	■
22	O-ring, coupler (not shown)	2	■	■	■
23	Enerpac Decal (not shown)	1	■	■	■
24	Warning Decal (not shown)	1	■	■	■
25	Decal Product Specification (not shown)	1	■	■	■

**Notes:**

■ Indicated item included in and available only as a part of the Repair Kit RARH150K50



Item nr.	Torque/ remark
9 and 11	Torque to 75 ft-lbs min [103 Nm]
12	Torque to 80-100 in-lbs [9-11 Nm]
6	Torque to 10-20 in-lbs [14-27 Nm]
3	Torque to 15-25 in-lbs [21-34 Nm]
12	Secure with Loctitte 271
3	Secure with Loctitte 222 PER EES 115-16