

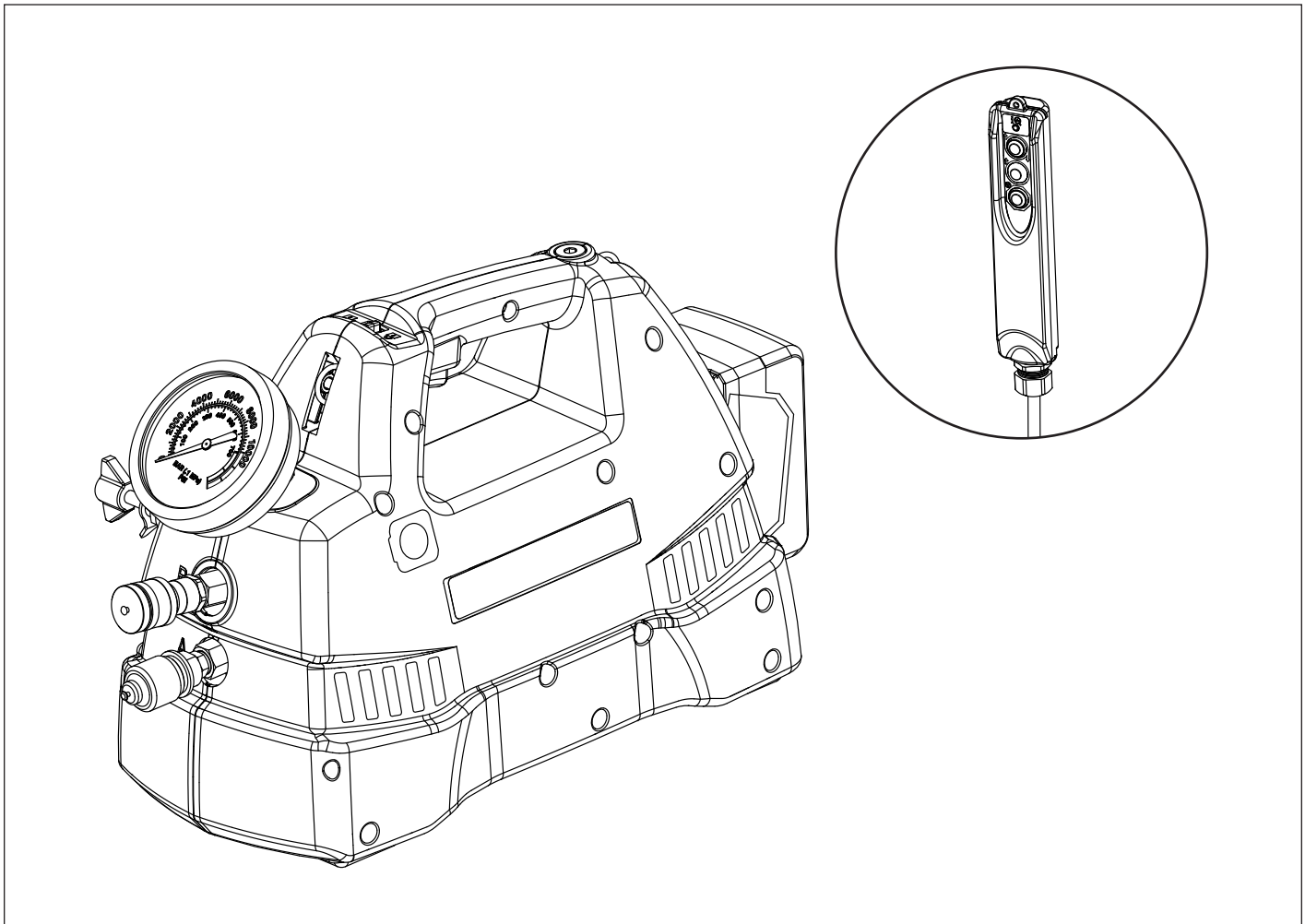
Document Number	Document Revision	Document Revision Date	Product Date Code Beginning With
L4272	A	11/2018	A

To Protect Your Warranty, Use Only ENERPAC Hydraulic Oil.

Enerpac recommends that all kit components be installed to insure optimum performance of the repaired product.

Table of Contents

Figure 1, Pump Shroud	2	Figure 6, Valve Assembly	8
Figure 2, Oil Fill and Vent Assembly	3	Figure 7, Pump Element Assembly	10
Figure 3, Shroud and Electrical Components	4	Figure 8, Eccentric Housing Assembly.....	12
Figure 4, Trigger Guard Assembly	5	Figure 9, Eccentric Shaft Sub-Assembly.....	13
Figure 5, Pump and Motor Assembly	6	Figure 10, Pendant Assembly.....	13



WARNING Fully relieve hydraulic pressure, remove battery and disconnect hydraulic hoses before beginning any maintenance, repair or inspection procedures. Failure to observe these precautions could result in death or serious personal injury.

1 Apply PTFE thread sealing tape.

2 Torque 18-26 in-lbs [2-3 Nm].

3 Torque 8-10 in-lbs [0.9-1.1 Nm].

4 Torque 10-12 ft-lbs [13.56-16.27 Nm].

5 Thinnest section toward front and top as shown.

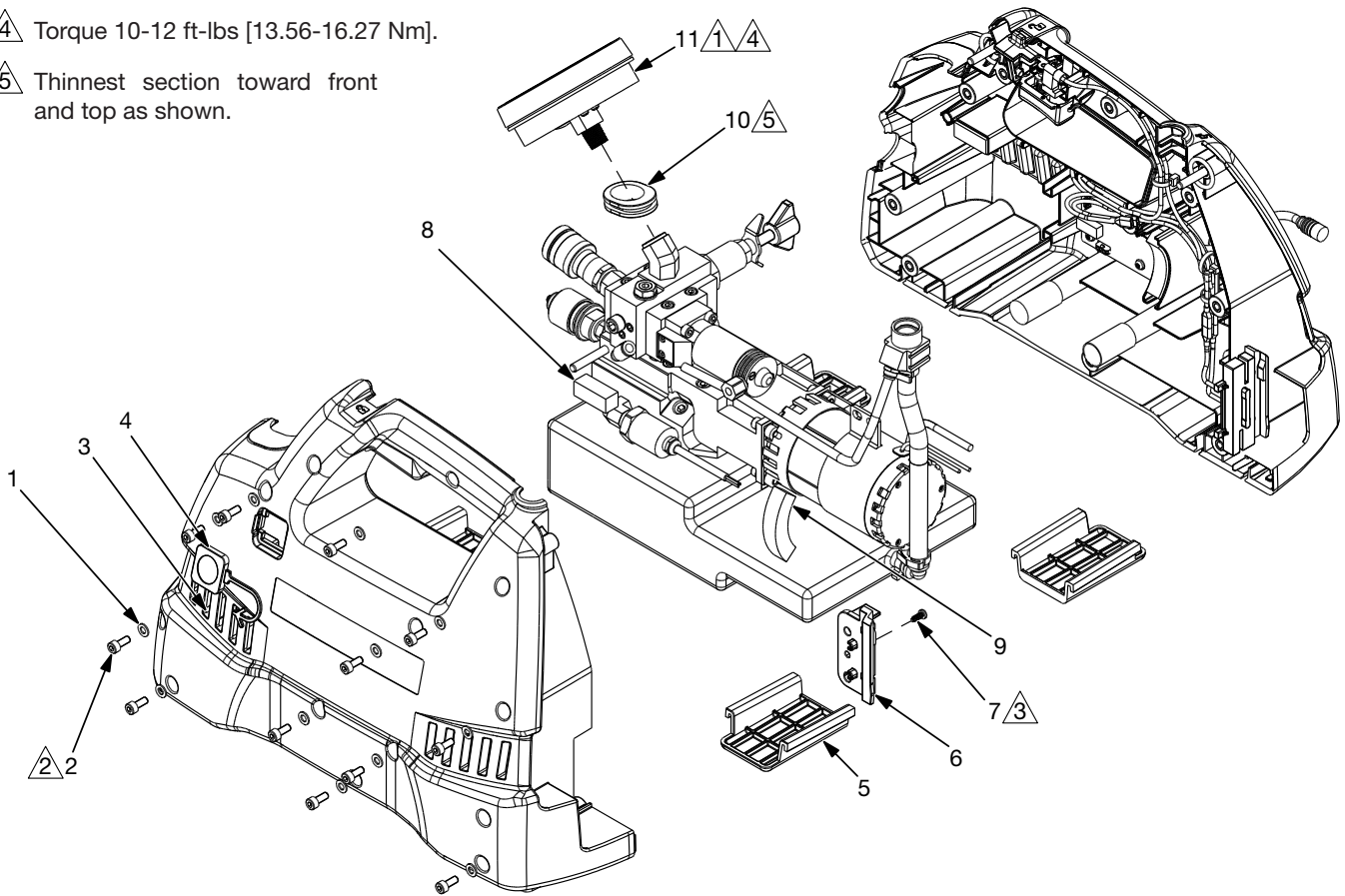


Figure 1, Pump Shroud

Repair Parts List (Refer to Figure 1)			
Item	Part Number	Qty.	Description
1	◆ CAE1050108-1A	12	Flat Washer DIN125A M5
2	◆ CBE517028-1A	12	Screw-SHCS, Hex, M5 x 0.8 x 12, 8.8, Zinc
3	◆ DD3405424	1	Shroud, LH
4	◆ DD3408098	1	Cover, UARV Access
5	♣ DD3414339	4	Foot, Slide
6	■ DD3420101	1	Guide, LH, Battery Lock
7	■ DD3883028	1	Screw (used to secure item 6 to LH shroud)
8	DD3887339	1	Bumper, Pump Isolator
9	DD4113339	1	Bumper, Isolator
10	◆ DD6566808	1	Gauge Grommet
11	DD7397223SR	1	Pressure Gauge

◆ Items included as part of shroud kit (XC3CSK).

■ Items included as part of battery guide kit (XC1BGK).

♣ Items included as part of rubber foot kit (XC1FK).

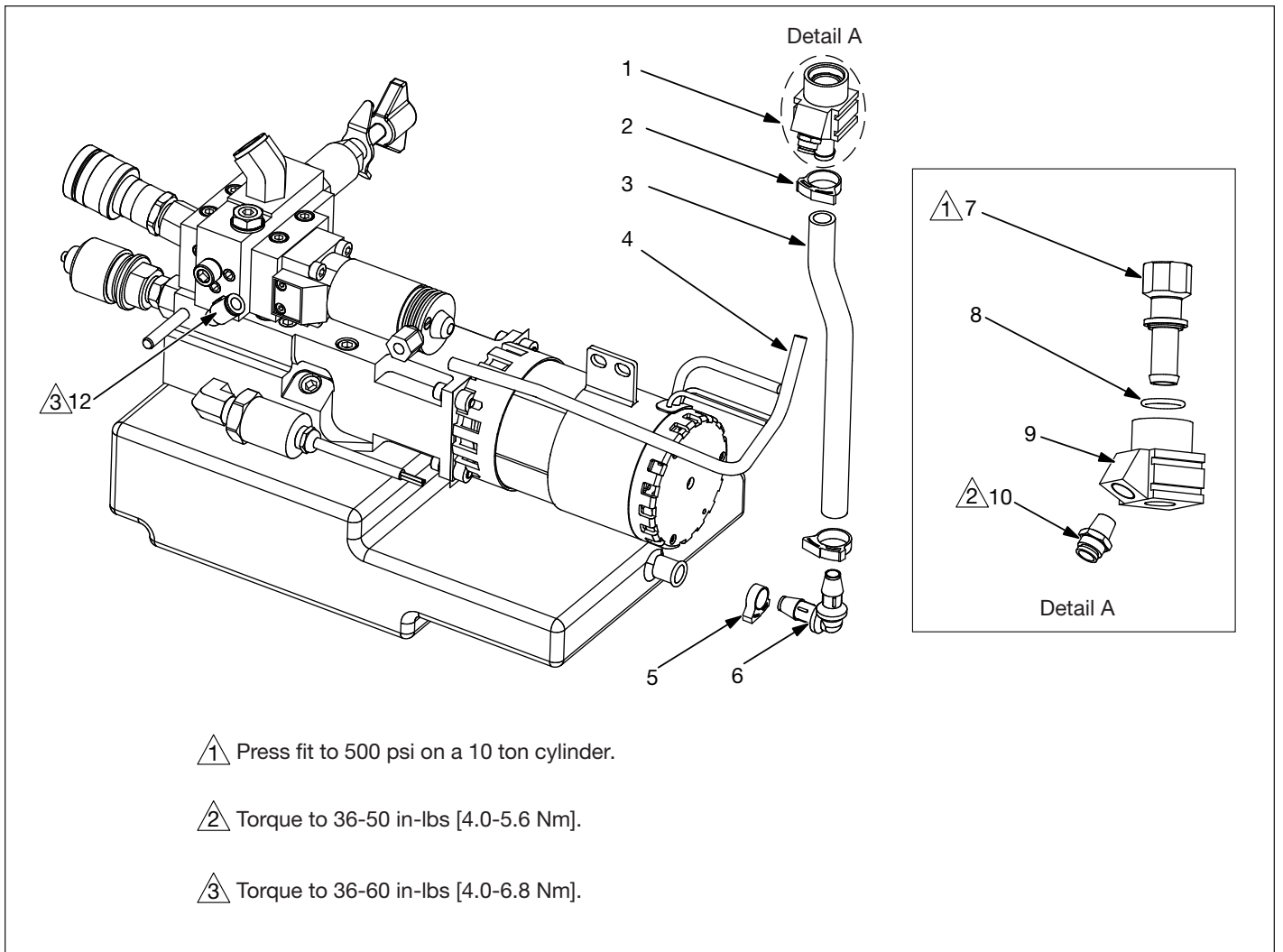
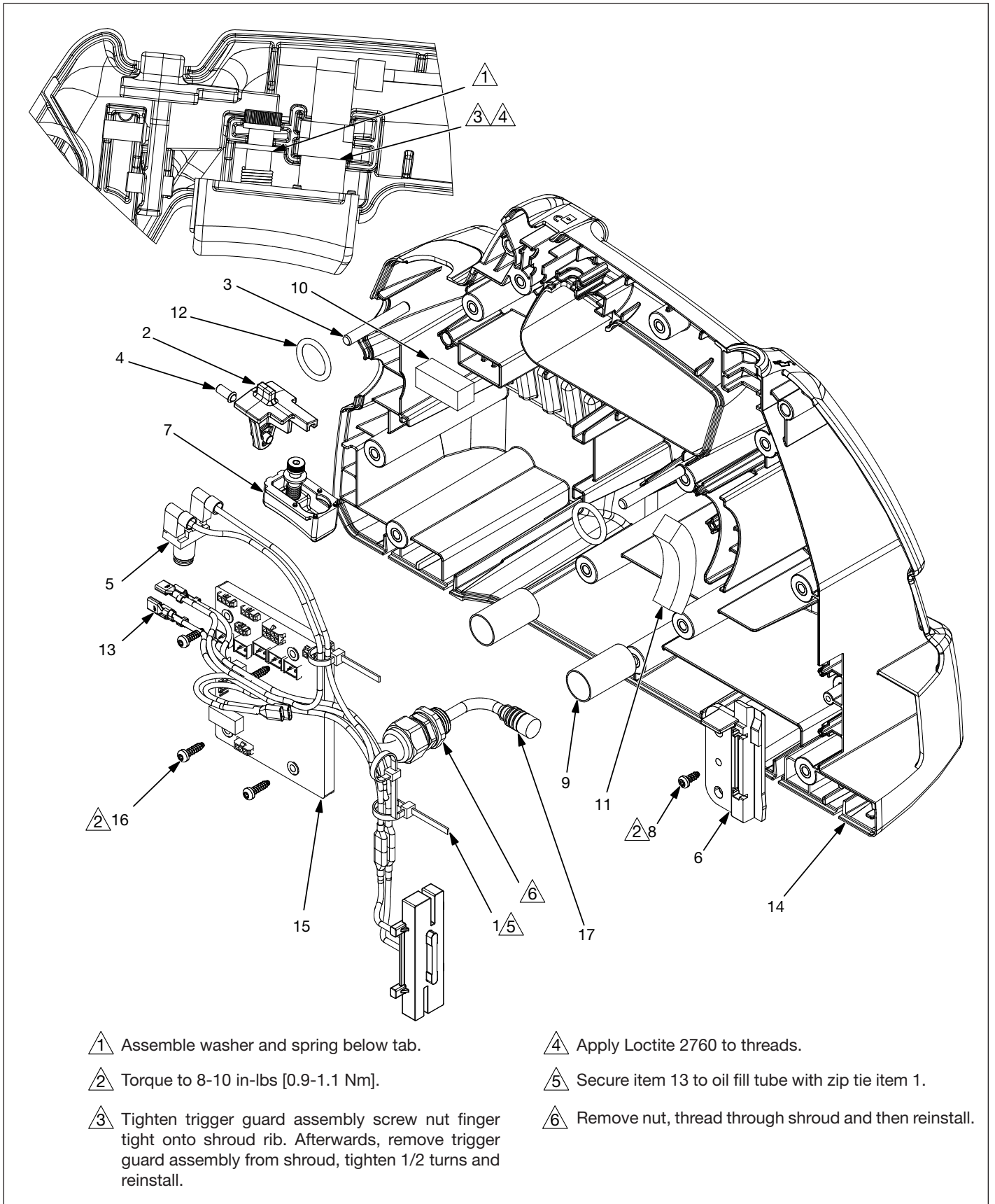


Figure 2, Oil Fill and Vent Assembly

Repair Parts List (Refer to Figure 2)			
Item	Part Number	Qty.	Description
1	○ DD3403900	1	Vented Fill Assembly
2	+ DD4118017	2	Reusable Oil Fill Clip
3	+ DD3415646	1	Oil Fill Hose
4	+ DD4108646	1	Oil Vent Hose
5	+ DD3885017	1	0.38 Reusable Clip
6	+ DD3416097	1	0.38 Barb Tube Elbow
7	○ DD3401097	1	Oil Vent/Fill Fitting
8	○ B1220503	1	O-Ring
9	○ DD3402097	1	Oil Vent/Fill Fitting
10	○ F100097-33	1	Fitting, 1/8" Male, 1/4" Tube
11	○ DD3948006	1	SAE #6 Plug (not shown)
12	+ F100097-52	1	90° Male Connector, 1/8"-27

+ Items included as part of oil fill tubing kit (XC1TK).

○ Items included as part of XC vented oil fill service kit (XC1VFK).



△1 Assemble washer and spring below tab.

△2 Torque to 8-10 in-lbs [0.9-1.1 Nm].

△3 Tighten trigger guard assembly screw nut finger tight onto shroud rib. Afterwards, remove trigger guard assembly from shroud, tighten 1/2 turns and reinstall.

△4 Apply Loctite 2760 to threads.

△5 Secure item 13 to oil fill tube with zip tie item 1.

△6 Remove nut, thread through shroud and then reinstall.

Figure 3, Shroud and Electrical Components

Repair Parts List (Refer to Figure 3)			
Item	Part Number	Qty.	Description
1	DC9876647	3	Black Cable Tie 6"
2	DD2998098	1	Safety Lock Cover
3	DD3417059	2	6 mm x 45 mm Long Pin
4	DD3421013	1	Safety Lock Detent
5	DD3423379	1	Switch, On-Off, Momentary
6	■ DD3426101	1	Guide, RH, Battery Lock
7	DD3882900	1	Trigger Guard Assembly
8	■ DD3883028	1	Screw (used to secure item 6 to RH shroud)
9	◆ DD3886268	2	Tube Guide Assembly
10	DD3887339	1	Pump Isolator Bumper
11	DD4113339	1	Isolator Bumper
12	DD4769667	2	Round Ring
13	DD6942960SR	1	Wire Harness for 60 amp 24 VDC XC Pump
14	◆ DD7332424	1	Shroud, RH
15	⊕ DD7368827	1	XCTW Application Board
16	⊕ DD7369128	4	Screw M4 x 14
17	DD7396960SR	1	Pigtail Pendant Connector

- ◆ Items included as part of shroud kit (XC3CSK).
- Items included as part of battery guide kit (XC1BGK).
- ⊕ Items included as part of XCTW PCB service kit (XC3ACK).

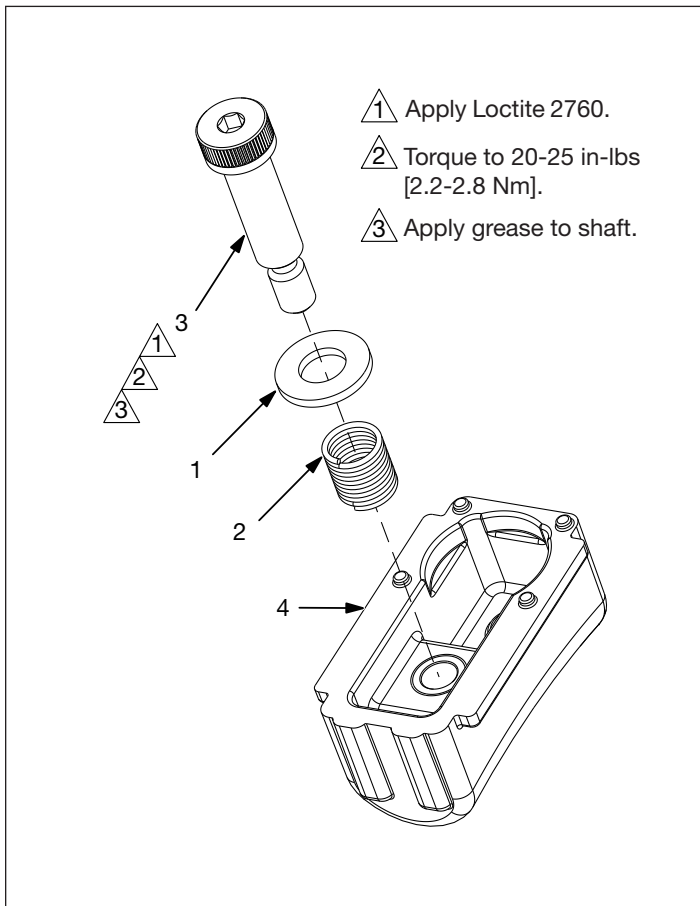
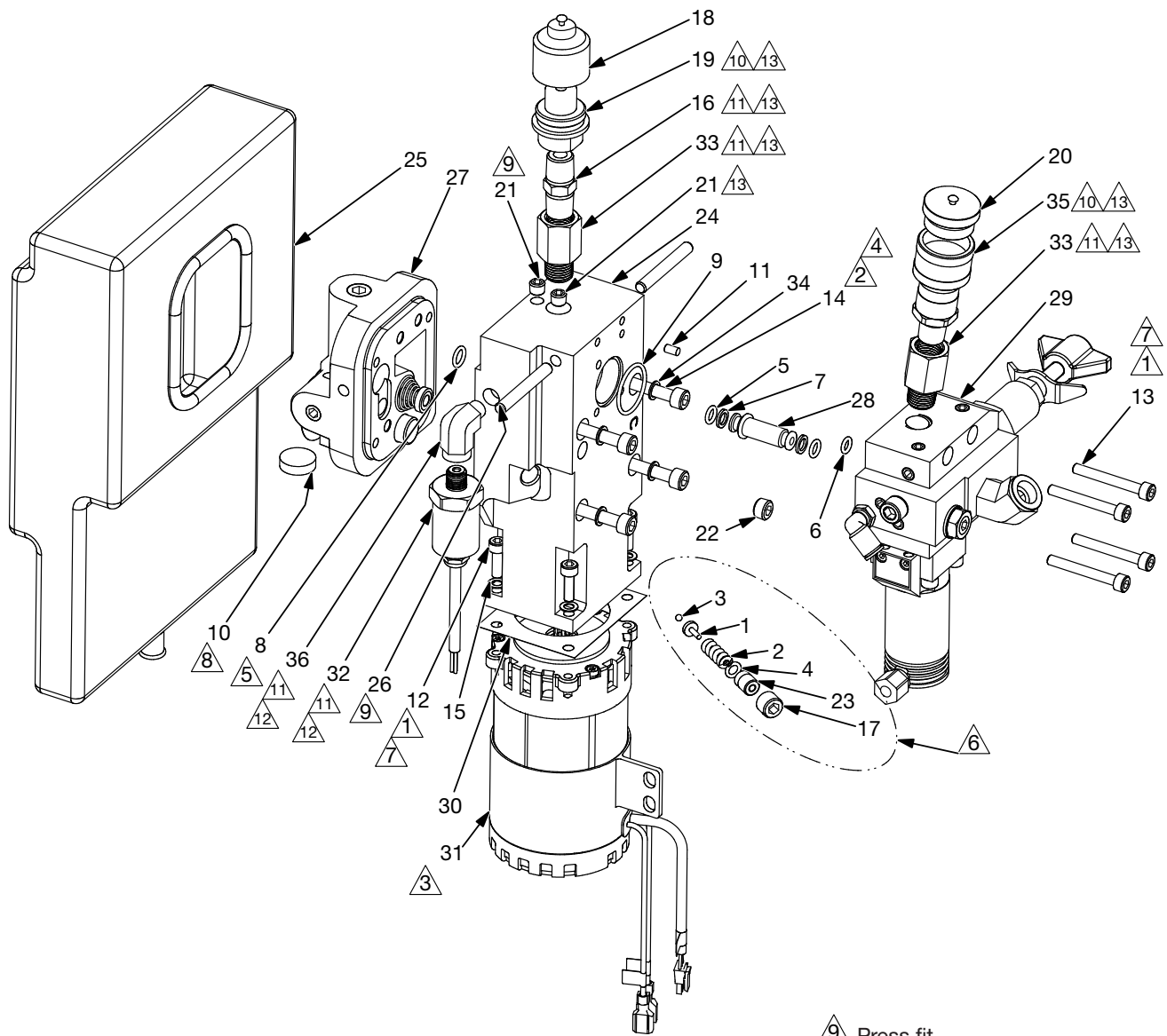


Figure 4, Trigger Guard Assembly

Repair Parts List (Refer to Figure 4)			
Item	Part Number	Qty.	Description
1	B1088108	1	Washer
2	DD4114098	1	Trigger Spring
3	DD4109028	1	Screw
4	DD3407110	1	Trigger Switch Cover



- | | | |
|---|---|---|
| △1 Torque to 55-65 in-lbs [6.2-7.3 Nm]. | △5 Install on Item 24. | △9 Press fit. |
| △2 Torque to 10-12 ft-lbs [17-20.5 Nm]. | △6 Install after pump, bladder and motor. | △10 Apply PTFE thread sealing tape prior to assembly. |
| △3 Orient with mounting tab up. | △7 Apply Loctite 243. | △11 Torque to 16-19 ft-lbs [22-26 Nm]. |
| △4 Torque to 55-65 in-lbs [6.2-7.3 Nm]. | △8 Attached magnet (Item 10) to Item 27, prior to assembling bladder (Item 25). | △12 Torque to 32-39 ft-lbs [43-53 Nm]. |
| | | △13 Apply Loctite 2760. |

Figure 5, Pump and Motor Assembly

Repair Parts List (Refer to Figure 5)			
Item	Part Number	Qty.	Description
1	‡ A8038570	1	Ball Cap
2	‡ A8126110	1	Spring
3	‡ B1003016	1	Ball 1/8"
4	‡▲ B1004503	1	O-ring 7/32", 11/32", 1/16"
5	** B1005503	2	O-ring 1/4", 3/8", 1/16"
6	** B1009803	1	O-ring 7/32", 11/32", 1/16"
7	▲** B1010564	2	Backup Washer
8	❖‡▲ B1011803	1	O-ring 5/16", 7/16", 1/16"
9	** DD7437203	1	XCTW Quad-Ring
10	C187018	1	Magnet
11	* CAA411061-2B	1	4 mm x 8 mm Dowel Pin
12	❖ * CBE519028-1A	4	Screw-SHCS, Hex, M5 x 0.8 x 16, 8.8, Zinc
13	** CCA529028-1A	4	Screw-SHCS, Hex, M5 x 0.8 x 40, 12.9, Plain
14	❖ CCA635028-1A	4	Screw-SHCS M6 x 55
15	❖ * CCE1050108-6A	4	Lock Washer
16	CJ647096	1	Pipe Nipple, 1/4" x 1/4" NPTF
17	‡ DC10131048	1	Set Screw, 7/16-20 x 0.38
18	DC6187234	1	Dust Cap (for female coupler)
19	DC6188020	1	Coupler
20	DC6629020	1	Dust Cap (for male coupler)
21	❖ DC6792245	2	PTF-SAE Flush Plug 0.062"
22	❖ DC6793245	1	PTF-SAE Flush Plug 1/8"
23	‡ DC7234009	1	Plug
24	❖ DD2990900	1	Eccentric Housing Assembly
25	‡ DD2991025	1	2L Bladder
26	❖ DD3417059	2	Pin, 6 mm x 45 mm Long
27	DD3868900	1	Pump Assembly
28	* DD4798268	1	Tube Connector
29	* DD5653900 (see Figure 6)	1	Valve Assembly 24VDC
30	* DD6917037	1	Gasket
31	* DD7013259	1	Motor
32	DD7065960SR	1	Pressure Transducer
33	DD7386038	2	1/4" NPTF Female x Male Straight Adaptor
34	❖‡▲ S3037	4	Gasket
35	U962148134-2	1	Female Coupler
36	Y714291	1	Elbow

❖ Items included as part of eccentric housing service kit (XC1ECK).

‡ Items included as part of 2 liter bladder kit (XC1B2LK).

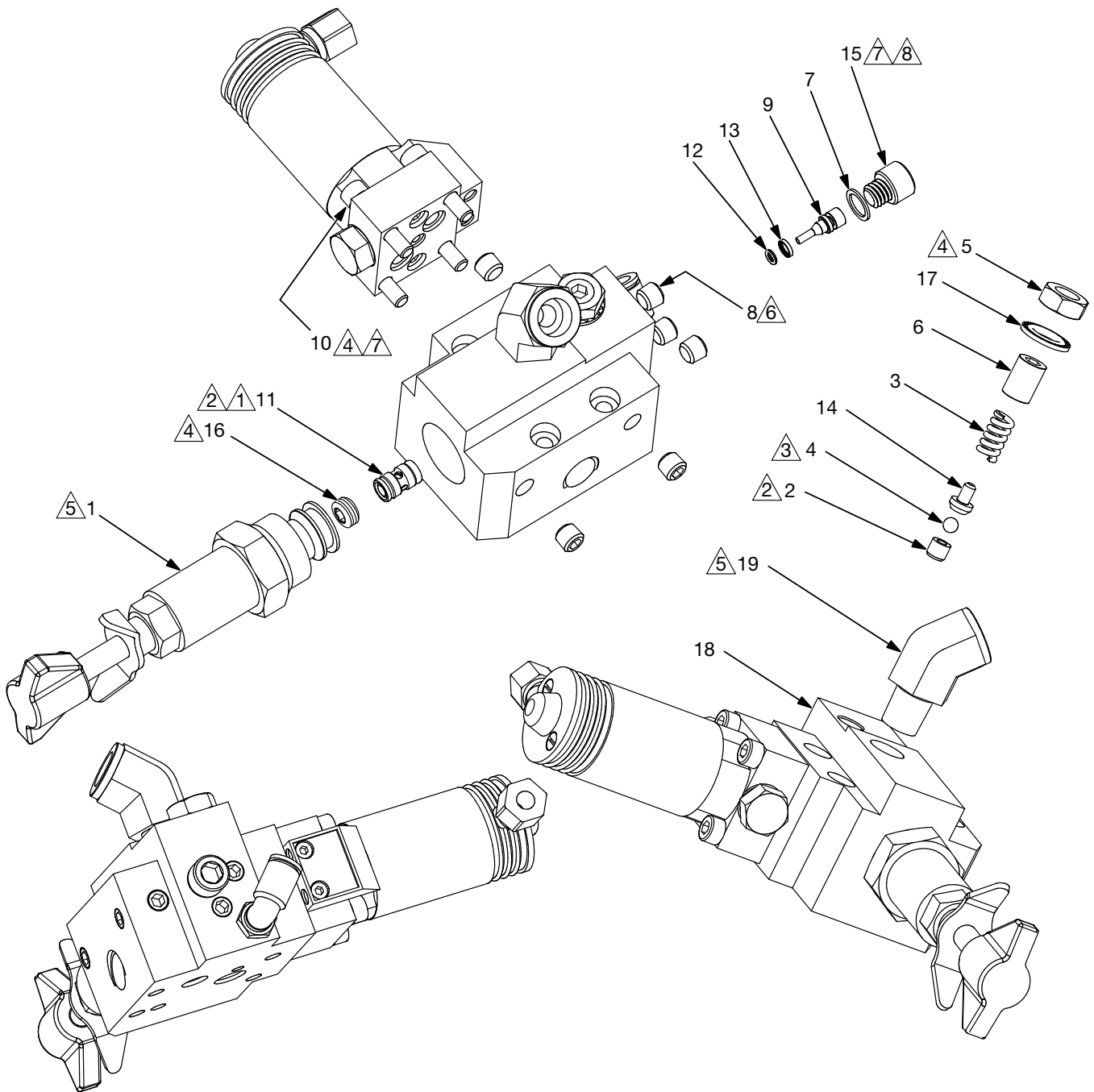
‡ Items included as part of UARV assembly kit (XA1UARVK).

▲ Items included as part of pump seal kit (XC3SK).

* Items included as part of 0.5 HP motor service kit (XC3EMK).

* Items included as part of torque wrench valve seal kit (XC3TVSK).

* Items included as part of torque wrench valve replacement kit (XC3MVK).



① Lubricate with oil prior to assembly.

⑦ Apply Loctite 243.

② Press fit to 825-875 psi on a 10 ton press.

⑧ Torque to 90-100 in-lbs [10.2-11.3 Nm].

③ Coin seat at 275-325 psi on a 10 ton press.

④ Torque to 55-65 in-lbs [6.6-7.3 Nm].

⑤ Torque to 49-59 ft-lbs [66.4-79.9 Nm].

⑥ Torque to 120-144 in-lbs [13.6-16.3 Nm].

Figure 6, Valve Assembly

Repair Parts List (Refer to Figure 6)			
Item	Part Number	Qty.	Description
1	45423SR	1	Cartridge Relief Valve
2	A8015290	1	Seat
3	● * A8038110	1	Spring
4	● * B1005016	1	3/16" Diameter Ball
5	● * B1006124	1	Hex Jam Nut
6	● * BF3808027F	1	Set Screw, Flat Point
7	* C846037	1	Copper Gasket
8	DC6792245	6	PTF-SAE Flush Plug 0.062
9	* DD4790051	1	B-Side Pilot Piston
10	DD5655660SR	1	Solenoid Valve
11	DD6005900	1	Shuttle Cartridge Assembly
12	* DD6330141	1	Piston O-ring
13	* DD6331141	1	Piston Slipper
14	● * DD6573013	1	Ball Guide
15	* DD6576028	1	5/16-18 x 1/4 SHCS
16	DD6957027	1	Hollow Set Screw, 1/8"-24 UNF x 0.1875
17	● * DD7232314	1	Sealing Washer
18	DD7322840	1	Valve Manifold
19	F100095	1	45° Fitting Elbow, Male-Female, 1/4" NPTF

● Items included as part of B-side relief kit (XC3BRK).

* Items included as part of torque wrench valve seal kit (XC3TVSK).

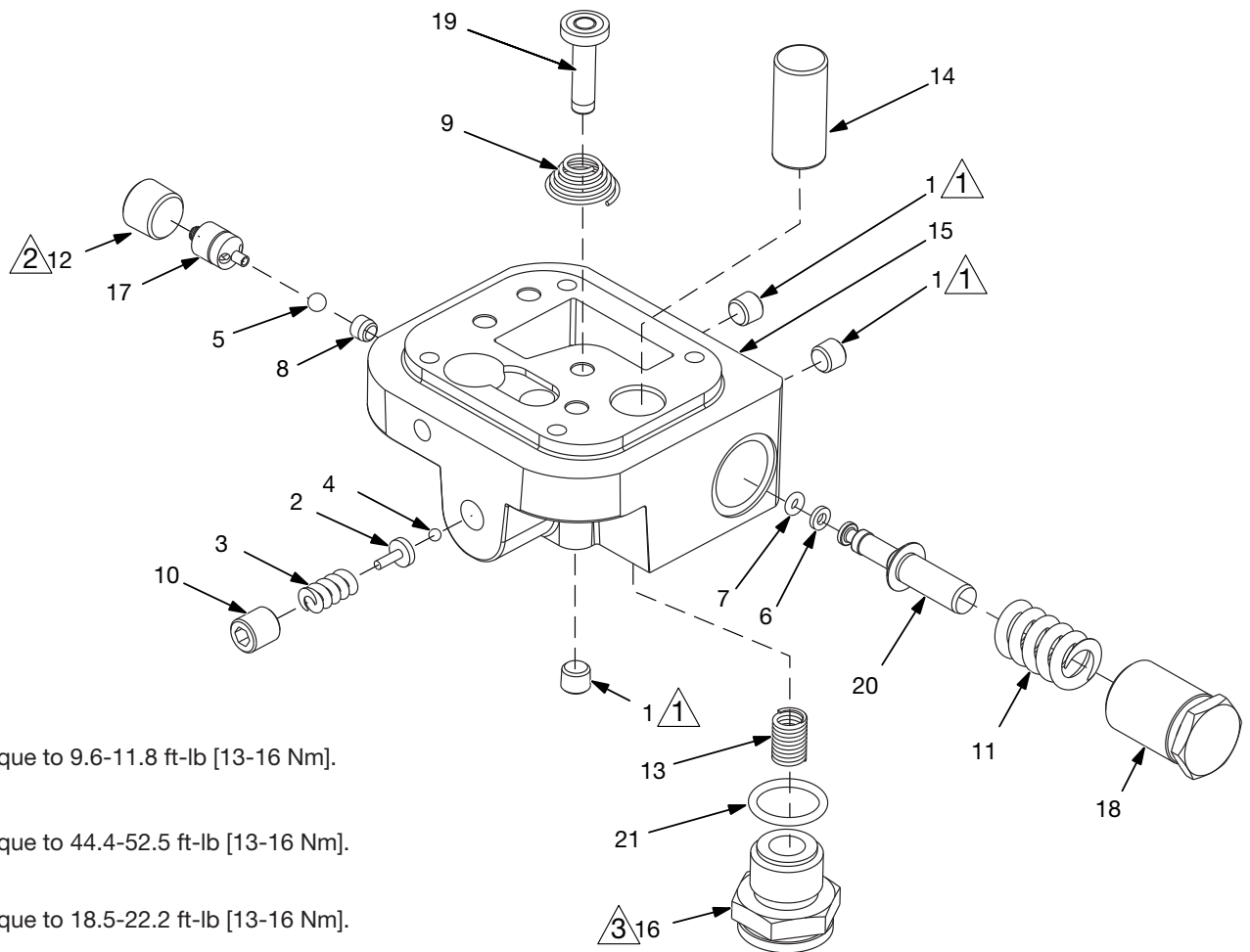


Figure 7, Pump Element Assembly

Repair Parts List (Refer to Figure 7)			
Item	Part Number	Qty.	Description
1	A1006245	3	Inner Gear New (included in air motor kit)
2	A8038570	1	Bearing - 6301
3	A8126110	1	Spring
4	B1003016	1	Gear Ring Key
5	B1005016	1	Bushing 12 x 37 x 1.5
6	▲ B1006564	1	Back-up Washer
7	▲ B1006803	1	O-ring
8	BSS5358D	1	Lower Piston Seat
9	BSS5509D	1	Conical Spring
10	DC1185-048	1	Hex Head Set Screw
11	DC394110	1	Spring Bypass
12	DC6794245	1	PTF-SAE Flush Plug 0.250
13	DC7026110	1	Spring
14	DC7027051	1	Piston, 14mm Diameter, LG
15	DC7201190	1	Pump Body
16	DC7453950	1	Inlet Check Valve Plug Assembly
17	DC7904900	1	Outlet Check Sub-Assembly
18	DC9208020	1	Bypass End Cap
19	DC9244920	1	Piston Assembly MPE
20	DC9292051	1	Piston Bypass - Parametric
21	▲ B1908503	1	O-ring

▲ Items included as part of pump seal kit (XC3SK).

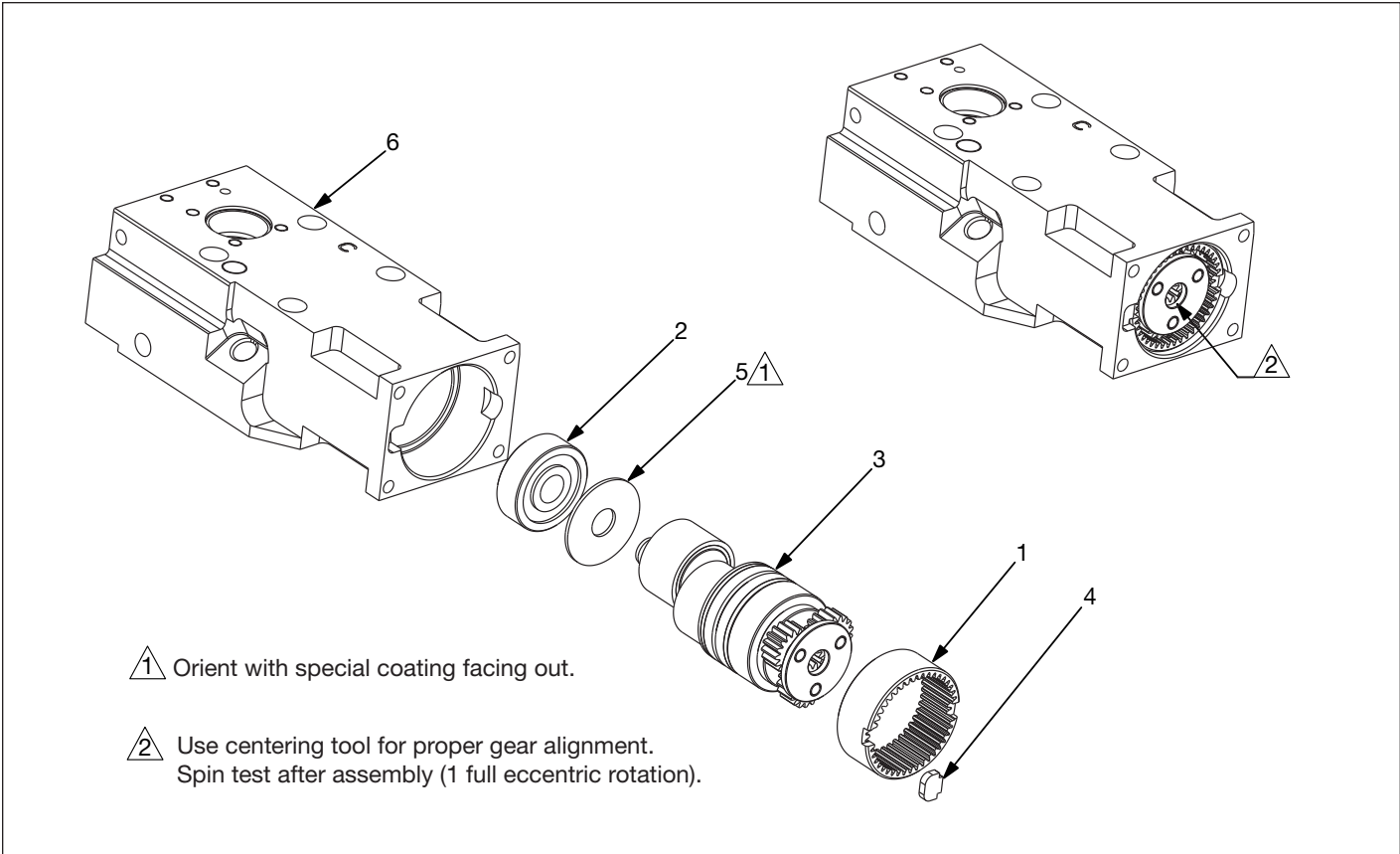


Figure 8, Eccentric Housing Assembly

Repair Parts List (Refer to Figure 8)			
Item	Part Number	Qty.	Description
1	DC7089228	1	Inner-Gear-New (included in air motor kit)
2	DC7096155	1	Bearing
3	DC7177950 (see Figure 9)	1	Eccentric Shaft Sub-Assembly
4	DC7452251	1	Key, Gear Ring
5	DC7464108	1	Bushing 12 x 37 x 1.5
6	DD2989001	1	Eccentric Housing, XB

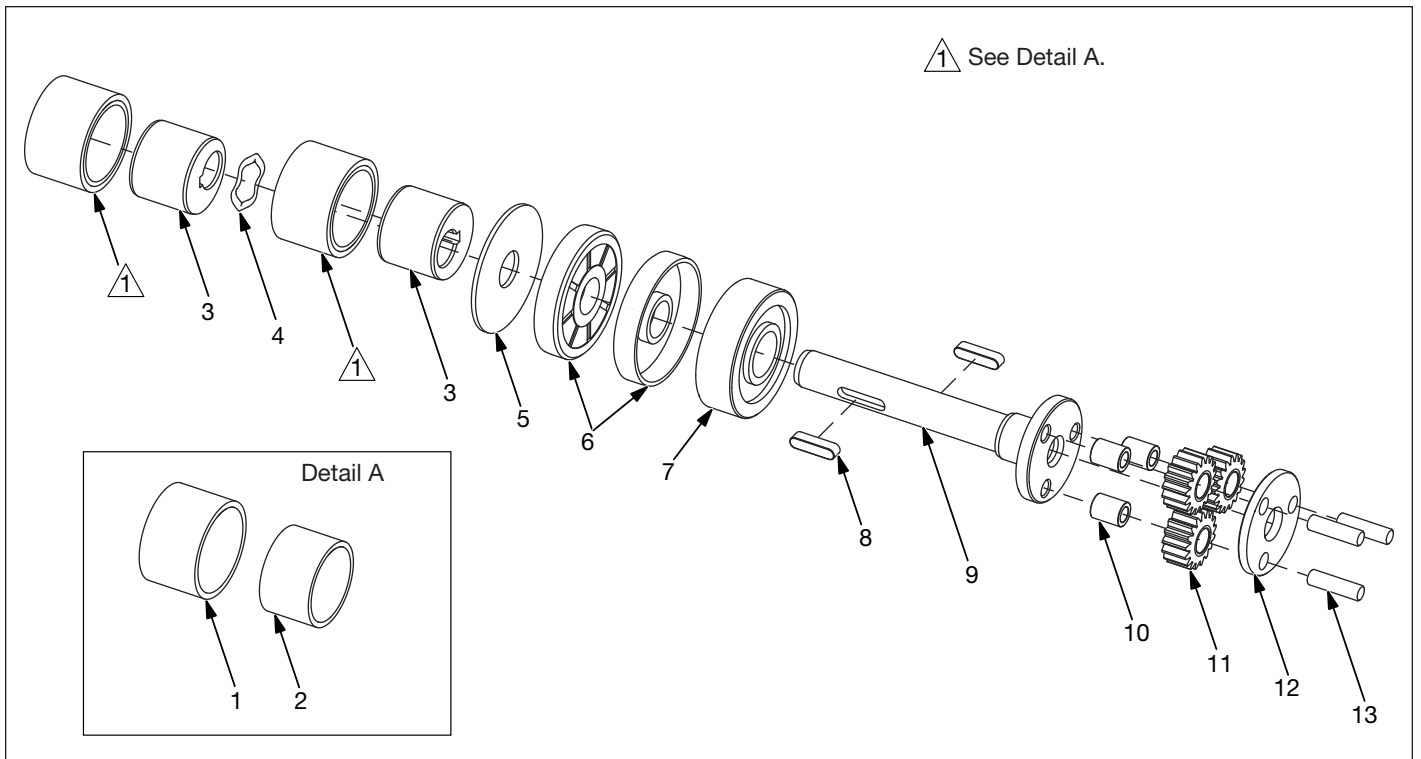


Figure 9, Eccentric Shaft Sub-Assembly

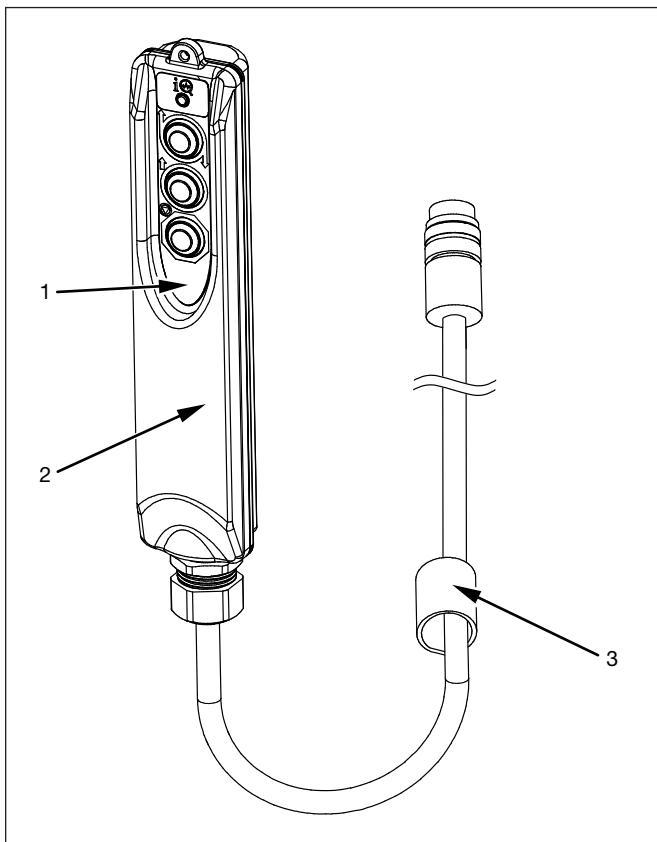


Figure 10, Pendant Assembly

Repair Parts List (Refer to Figure 9)			
Item	Part Number	Qty.	Description
1	DC108950	2	Bushing
2	(included with item #1)	2	Cam
3	DC7117537	2	Eccentric, 4 mm Offset
4	DC7750410	1	Wave Spring
5	DC7186108	1	Thrust Washer
6	DC7090476	2	Lip Seal
7	DC7097155	1	Bearing
8	DC7191251	2	Key
9	DC7091104	1	Shaft
10	DC7747155	3	Needle Bearing
11	DC7100228	3	Planetary Gear
12	DC7445101	1	Shaft Plate
13	DC7166059	3	Axle Pin

Repair Parts List (Refer to Figure 10)			
Item	Part Number	Qty.	Description
1	☆ DD7348026	1	Pendant Decal
2	☆ DD7283900	1	Pendant
3	☆ DA7570217	1	Cord Strap

☆ Items included as part of XCTW pendant replacement kit (XC3P3BK).

ENERPAC 

POWERFUL SOLUTIONS. GLOBAL FORCE.

<http://www.enerpac.com>