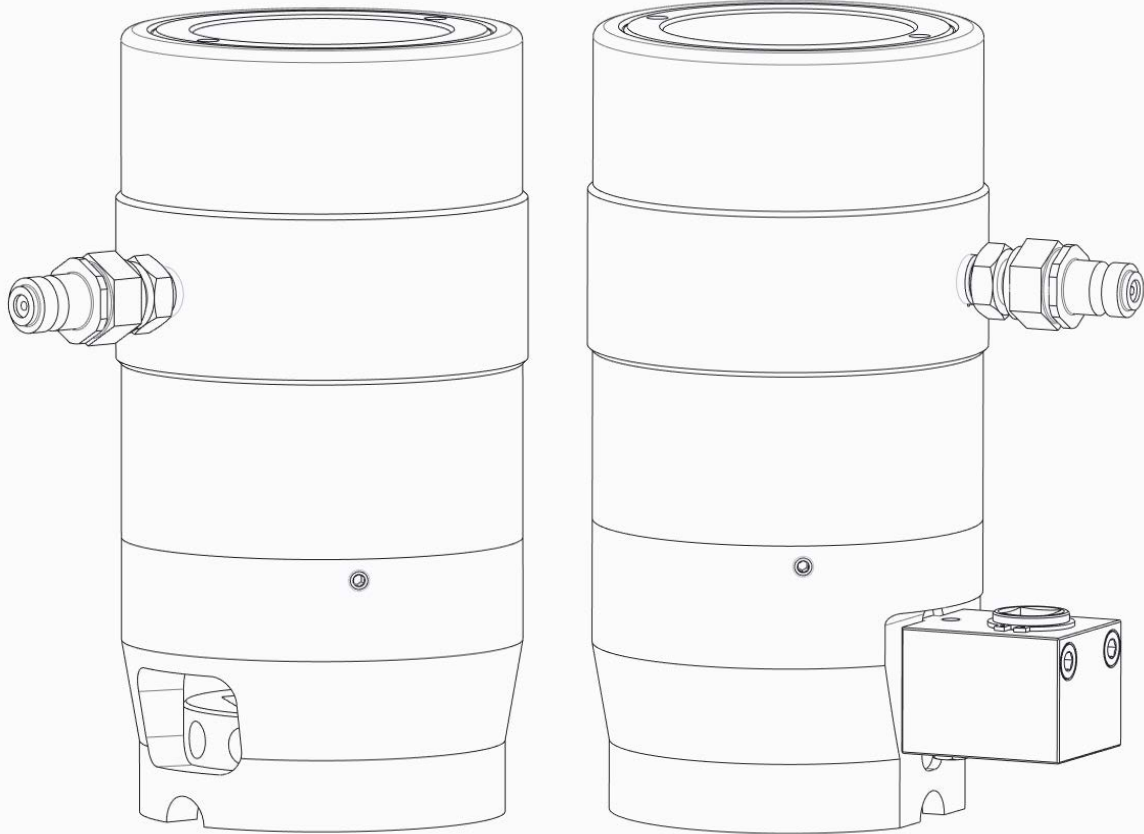


To Protect Your Warranty, Use Only ENERPAC Hydraulic Fluid.
Enerpac recommends that all kit components be installed to insure optimum performance of the repaired product.



Assembly Notes:

- Correct Torque Values

- i. Apply torque of 40-50Nm/ 29.5-36.9ft lb to tighten adaptor/ swivel
- ii. Apply torque of 40-50Nm/ 29.5-36.9ft lb to tighten coupling secured to adaptor/ swivel

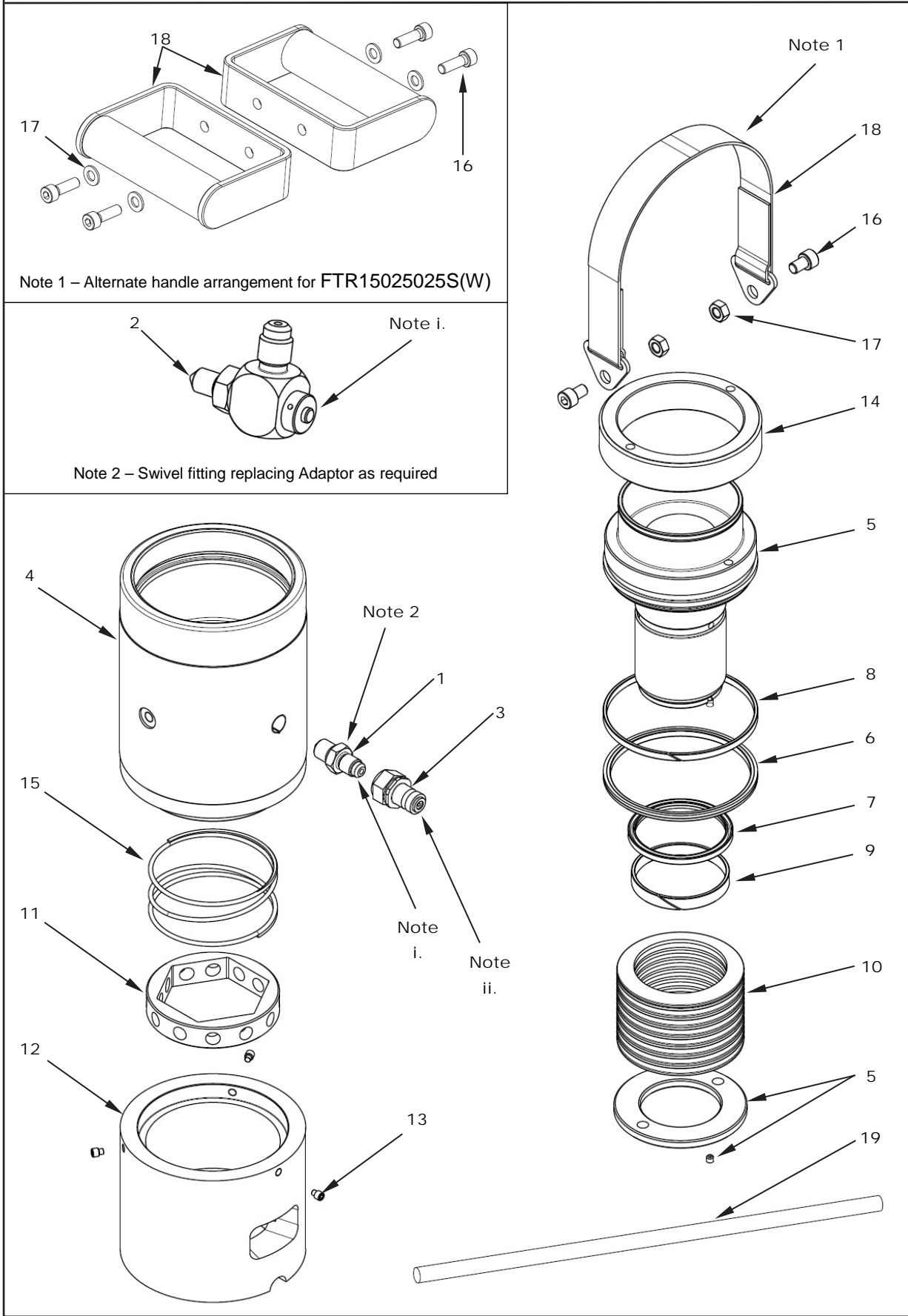


Figure 1, Exploded View, FTR-Series Foundation Tensioners, Round

Repair Parts List For Figure 1 – FTR-Series Foundation Tensioners, Round					
Item	Description	Qty	Part Numbers		
			FTR751010S FTR751010SW	FTR751025S FTR751025SW	FTR751110S FTR751110SW
1	Adaptor	1	Ⓐ002AU0023614	Ⓐ002AU0023614	Ⓐ002AU0023614
2	Swivel Elbow	1	Ⓑ002BM0026517	Ⓑ002BM0026517	Ⓑ002BM0026517
3	Quick Disconnect Coupling	1	ⒶⒷ002NA0026568	ⒶⒷ002NA0026568	ⒶⒷ002NA0026568
4	Body	1	004AA0025224	004AA0072292	004AA0025224
5	Piston Assembly (including Spring Collar and Set Screw)	1	004HB0073235	004HB0073245	004HB0073237
6	Outer Seal and AER	1	Ⓒ012ED0025479	Ⓔ012ED0032333	Ⓒ012ED0025479
7	Inner Seal and AER	1	Ⓒ012EC0025489	Ⓔ012EC0032354	Ⓒ012EC0025489
8	Outer Bearing Strip	1	Ⓒ012HB0025612	Ⓔ012HB0025612	Ⓒ012HB0025612
9	Inner Bearing Strip	1	Ⓒ012HB0025613	Ⓔ012HB0025613	Ⓒ012HB0025613
10	Disc Springs	1 Set	016AC0031093 (7 individual)	016AC0072278 (15 individual)	016AC0031093 (7 individual)
11	Socket	1	004AJ0072848	004AJ0072265	004AJ0025226
12	Bridge	1	Ⓓ004AD0072847	Ⓔ004AD0072264	Ⓒ004AD0025223
13	Socket Set Screw (Tensioner Body)	3	Ⓓ001EJ0025666	Ⓔ001EA0026397	Ⓒ001EJ0025666
14	End Stop	-	+	+	+
15	Compression Spring	-	+	+	+
16	Socket Head Cap Screw (Handle)	-	+	+	+
17	Flat Washer (Handle)	-	+	+	+
18	Handle	-	+	+	+
19	Tommy Bar (10mmØ 330mm)	1	004CH0025495	004CH0025495	004CH0025495
Ⓐ Available as part of Straight Coupler Kit 002NG0040569			Ⓔ Available as part of Seal Kit CKSHA0072290		
Ⓑ Available as part of Swivel Coupler Kit 026CF0026523			Ⓕ Available as part of Bridge Kit 004HC0074376		
Ⓒ Available as part of Seal Kit CKSAC0036559			Ⓖ Available as part of Bridge Kit 004HC0074377		
Ⓓ Available as part of Bridge Kit 004HC0074375					
+ Not included in assembly					

Repair Parts List For Figure 1 – FTR-Series Foundation Tensioners, Round				
Item	Description	Qty	Part Numbers	
			FTR15013810S FTR15013810SW	FTR15012510S FTR15012510SW
1	Adaptor	1	Ⓐ002AU0023614	Ⓐ002AU0023614
2	Swivel Elbow	1	Ⓑ002BM0026517	Ⓑ002BM0026517
3	Quick Disconnect Coupling	1	ⒶⒷ002NA0026568	ⒶⒷ002NA0026568
4	Body	1	004AA0031702	004AA0031702
5	Piston Assembly (including Spring Collar and Set Screw)	1	004HB0073006	004HB0073052
6	Outer Seal and AER	1	Ⓜ012ED0032337	Ⓜ012ED0032337
7	Inner Seal and AER	1	Ⓜ012EC0025489	Ⓜ012EC0025489
8	Outer Bearing Strip	1	Ⓜ012HB0025612	Ⓜ012HB0025612
9	Inner Bearing Strip	1	Ⓜ012HB0025613	Ⓜ012HB0025613
10	Disc Springs	1 Set	016AC0031093 (7 individual)	016AC0031093 (7 individual)
11	Socket	1	004AJ0031698	004AJ0035773
12	Bridge	1	Ⓛ004AD0031701	Ⓛ004AD0031701
13	Socket Set Screw (Tensioner Body)	3	Ⓛ001EB0030364	Ⓛ001EB0030364
14	End Stop	-	+	+
15	Compression Spring	-	+	+
16	Socket Head Cap Screw (Handle)	-	+	+
17	Flat Washer (Handle)	-	+	+
18	Handle	-	+	+
19	Tommy Bar (10mmØ 330mm)	1	004CH0025495	004CH0025495
Ⓐ Available as part of Straight Coupler Kit 002NG0040569			Ⓜ Available as part of Seal Kit CKSAC0031704	
Ⓑ Available as part of Swivel Coupler Kit 026CF0026523			Ⓛ Available as part of Bridge Kit 004HC0074378	
+ Not included in assembly				

Repair Parts List For Figure 1 – FTR-Series Foundation Tensioners, Round				
Item	Description	Qty	Part Numbers	
			FTR751420S FTR751420SW	FTR15025025S FTR15025025SW
1	Adaptor	1	Ⓐ002AU0023614	Ⓐ002AU0023614
2	Swivel Elbow	1	Ⓑ002BM0026517	Ⓑ002BM0026517
3	Quick Disconnect Coupling	1	ⒶⒷ002NA0026568	ⒶⒷ002NA0026568
4	Body	1	004AA0037268	004AA0073021
5	Piston Assembly (including Spring Collar and Set Screw)	1	004HB0073259	004HB0073026
6	Outer Seal and AER	1	Ⓣ012EB0037350	Ⓜ012ED0073018
7	Inner Seal and AER	1	Ⓣ012EA0037274	Ⓜ012EC0036942
8	Outer Bearing Strip	1	Ⓣ012HB0025612	Ⓜ012HB0073031
9	Inner Bearing Strip	1	Ⓣ012HB0025613	Ⓜ012HB0073032
10	Disc Springs	1 Set	016AC0037275 (15 individual)	016AC0073017 (9 individual)
11	Socket	1	004AJ0037273	004AJ0068217
12	Bridge	1	Ⓚ004AD0037270	Ⓝ004AD0073023
13	Socket Set Screw (Tensioner Body)	3	Ⓚ001EJ0025666	Ⓝ001EB0030364
14	End Stop	1	004AK0037271	+
15	Compression Spring	1	016AA0038908	+
16	Socket Head Cap Screw (Handle)	-	Ⓛ001AB0000660 (2)	Ⓞ001AB0000664 (4)
17	Flat Washer (Handle)	-	Ⓛ001ND0027218 (2)	Ⓞ001HA0039369 (4)
18	Handle	1	Ⓛ004AY0034789	Ⓞ004AY0073024
19	Tommy Bar (10mmØ 330mm)	1	004CH0025495	004CH0025495
Ⓐ Available as part of Straight Coupler Kit 002NG0040569			Ⓛ Available as part of Handle Kit 004HS0074384	
Ⓑ Available as part of Swivel Coupler Kit 026CF0026523			Ⓜ Available as part of Seal Kit CKSAC0073025	
Ⓣ Available as part of Seal Kit CKSHA0072807			Ⓝ Available as part of Bridge Kit 004HC0074381	
Ⓚ Available as part of Bridge Kit 004HC0074380			Ⓞ Available as part of Handle Kit 004HS0074385	
+ Not included in assembly				

Assembly Notes:

- Correct Torque Values

- i. Apply torque of 40-50Nm/ 29.5-36.9ft lb to tighten adaptor/ swivel
- ii. Apply torque of 40-50Nm/ 29.5-36.9ft lb to tighten coupling secured to adaptor/ swivel
- iii. Apply torque of 13Nm/ 9.5ft lb to tighten cap screws securing Gearbox Assembly to Bridge

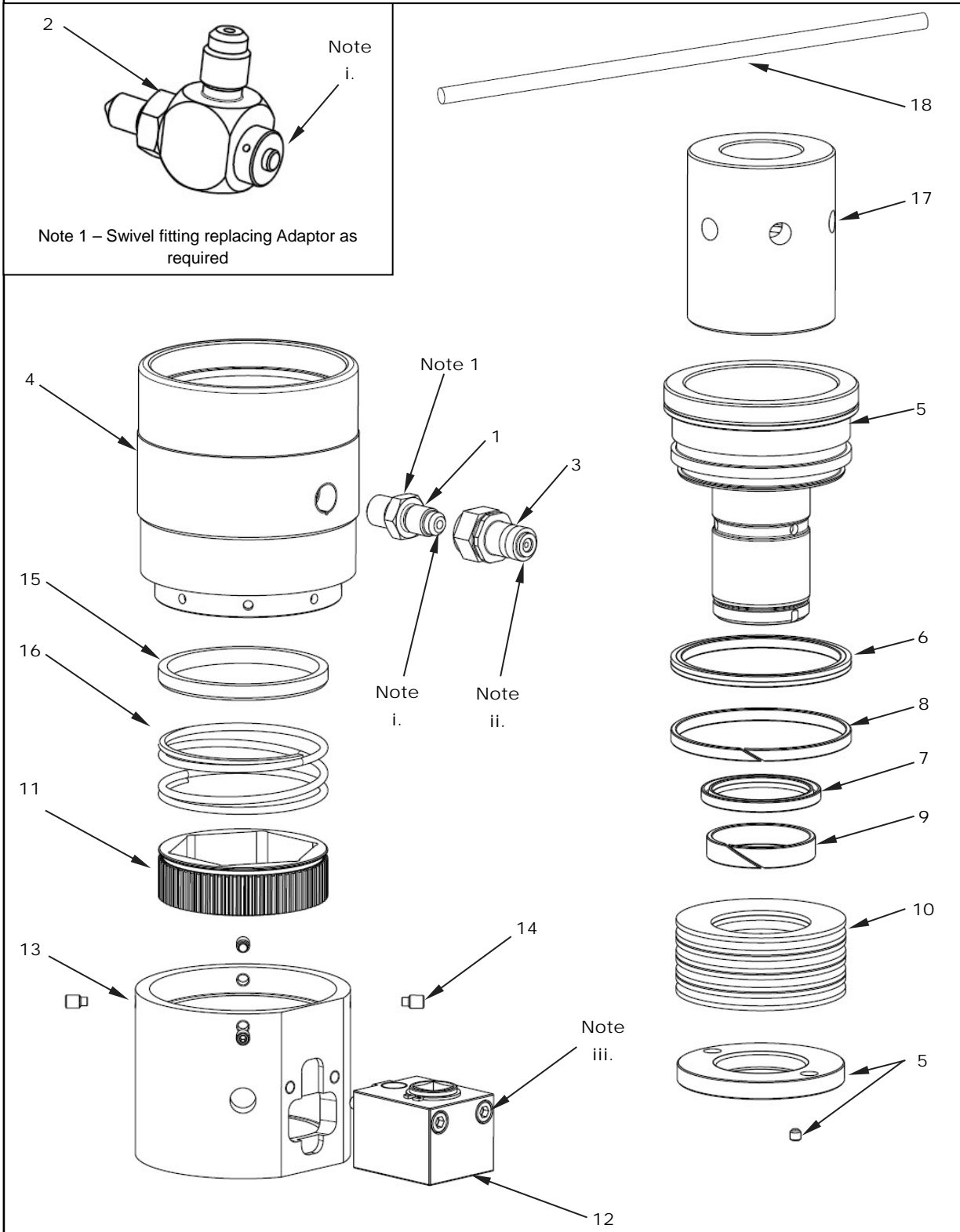


Figure 2, Exploded View, FTR-Series Foundation Tensioners, Round with Gearbox Assembly

Repair Parts List For Figure 1 – FTR-Series Foundation Tensioners, Round				
Item	Description	Qty	Part Numbers	
			FTR751125SG FTR751125SWG	FTR1093610SG FTR1093610SGW
1	Adaptor	1	Ⓐ002AU0023614	Ⓐ002AU0023614
2	Swivel Elbow	1	Ⓑ002BM0026517	Ⓑ002BM0026517
3	Quick Disconnect Coupling	1	ⒶⒷ002NA0026568	ⒶⒷ002NA0026568
4	Body	1	004AA0072292	004AA0034981
5	Piston Assembly (including Spring Collar and Set Screw)	1	004HB0073266	004HB0073005
6	Outer Seal and AER	1	Ⓔ012ED0032333	Ⓔ012ED0032332
7	Inner Seal and AER	1	Ⓔ012EC0032354	Ⓔ012EC0025488
8	Outer Bearing Strip	1	Ⓔ012HB0025612	Ⓔ012HB0025612
9	Inner Bearing Strip	1	Ⓔ012HB0025613	Ⓔ012HB0025613
10	Disc Springs (1 set)	-	016AC0072278 (15)	016AC0028113 (8)
11	Geared Socket	1	004AX0072295	004AX0024001
12	Gearbox Assembly	1	004HF0024007	004HF0024007
13	Bridge	1	Ⓔ004AD0072294	Ⓔ004AD0034985
14	Socket Set Screw (Tensioner Body)	-	Ⓔ001EA0026397 (3)	Ⓔ001EA0026397 (4)
15	Spring Retainer	1	+	Ⓢ004CE0034986
16	Compression Spring	1	+	Ⓢ016AA0028108
17	Reaction Nut	1	+	004AG0034983
18	Tommy Bar (10mmØ 330mm)	1	+	004CH0025495
Ⓐ Available as part of Straight Coupler Kit 002NG0040569			Ⓔ Available as part of Seal Kit CKSHA0073004	
Ⓑ Available as part of Swivel Coupler Kit 026CF0026523			Ⓔ Available as part of Bridge Kit 004HC0074383	
Ⓔ Available as part of Seal Kit CKSHA0072290			Ⓢ Available as part of Hardware Kit 004HP0074386	
Ⓔ Available as part of Bridge Kit 004HC0074382				
+ Not included in assembly				

ENERPAC 

www.enerpac.com