

**ENERPAC** 

**TOOLS. SERVICES. SOLUTIONS.**

Repair Parts Sheet

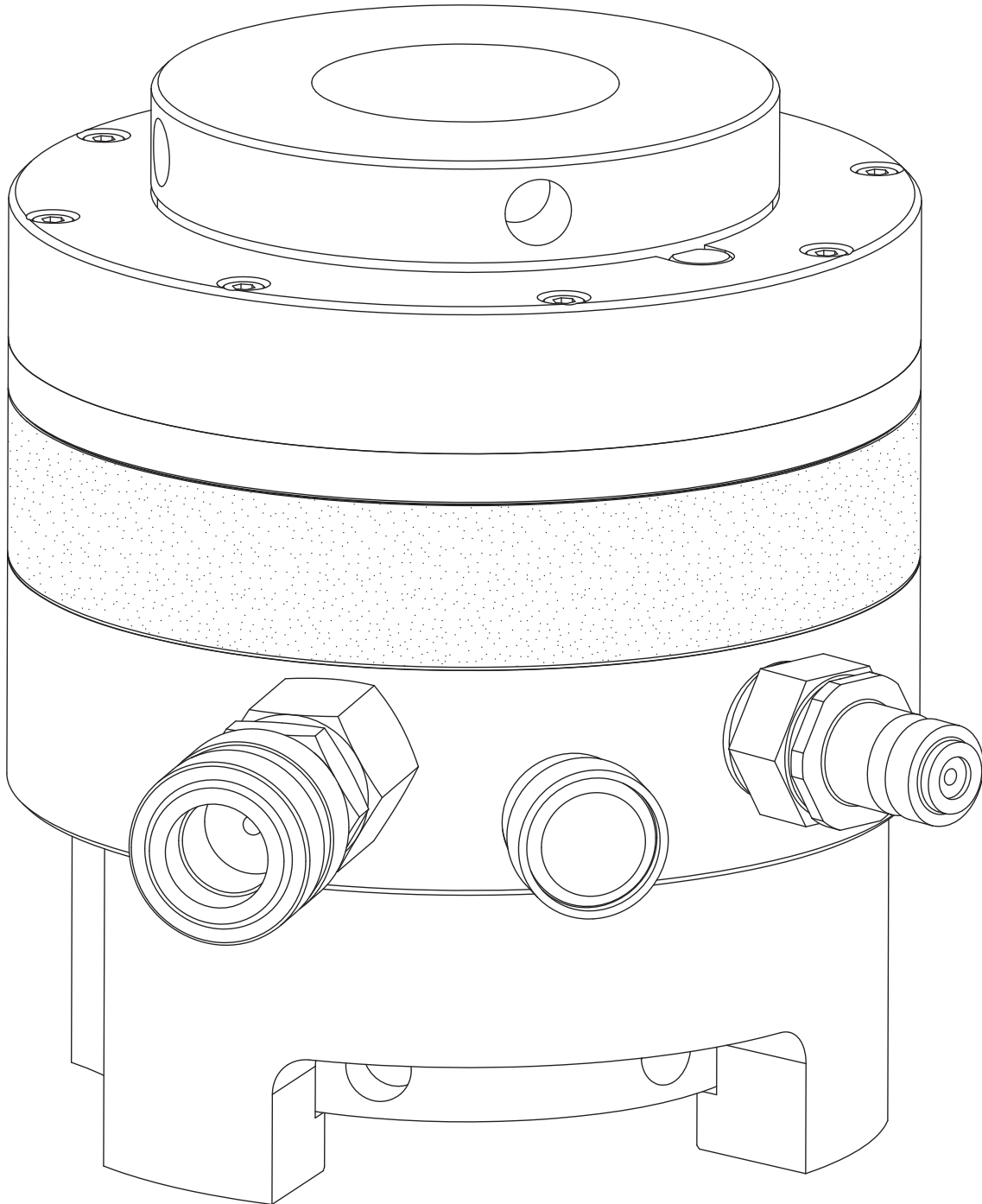
HydraMax<sup>®</sup> Tensioner

L4372 Rev. A 03/19

For Date Codes Beginning with the Letter "A"

**To Protect Your Warranty, Use Only ENERPAC Hydraulic Oil.**

Enerpac recommends that all kit components be installed to insure optimum performance of the repaired product.



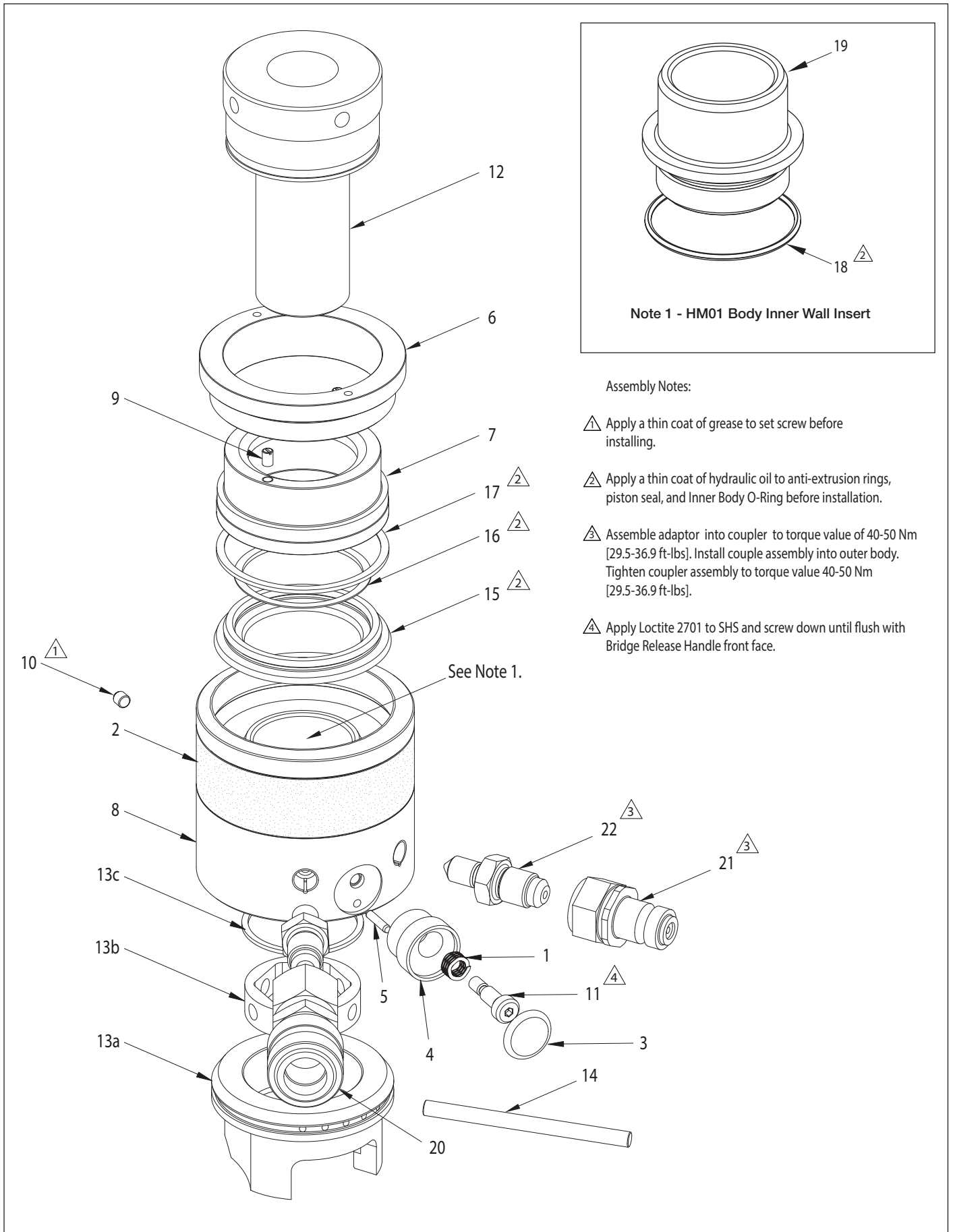


Figure 1, Exploded View, HydraMax® Series Hydraulic Tensioner (Models HM01, HM02, HM03)

**Repair Parts List For Figure 1 – HydraMax® Series Hydraulic Tensioner, Models  
HM01, HM02, HM03**

Item	Description	Qty	Part Numbers		
			Model HM01	Model HM02	Model HM03
1	Wave Spring	1	▲	▼	●
2	Grip Tape	1	▲	▼	●
3	Label	1	▲	▼	●
4	Bridge Release Handle	1	▲	▼	●
5	Bridge Release Pin	1	▲	▼	●
6	Stop Ring	1	004AK0002215	004AK0002216	004AK0002217
7	Piston	1	004AB0001964	004AB0001965	004AB0001966
8	Cylinder Body Outer	1	004AA0001949	004AA0001950	004AA0001951
9	Slotted Grub Screw	2	▲	▼	●
10	Socket Set Screw	1	▲	▼	●
11	Socket Head Shoulder Screw	1	▲	▼	●
12	Puller	1	See Table 1, page 13	See Table 1, page 13	See Table 1, page 13
13	Bridge Assembly	1	See Table 1, page 13	See Table 1, page 13	See Table 1, page 13
13a	Bridge	1	See Table 1, page 13	See Table 1, page 13	See Table 1, page 13
13b	Socket	1	See Table 1, page 13	See Table 1, page 13	See Table 1, page 13
13c	Snap Ring	1	See Table 1, page 13	See Table 1, page 13	See Table 1, page 13
14	Tommy Bar	1	TBARD06L1650	TBARD06L1650	TBARD06L1650
15	Seal	1	▲◆	▼✦	●❖
16	Seal Inner Back-Up Ring	1	▲◆	▼✦	●❖
17	Seal Outer Back-Up Ring	1	▲◆	▼✦	●❖
18	O-Ring	1	▲◆□	-	-
19	Cylinder Body Inner Wall	1	□	-	-
20	Female QD Coupler (Includes Dust Cap)	1	▲×	▼×	●×
21	Male QD (Includes Dust Cap)	1	▲×	▼×	●×
22	Adaptor	2	▲×	▼×	●×
▲ Available as part of Repair Kit HM01RK. ▼ Available as part of Repair Kit HM02RK. ● Available as part of Repair Kit HM03RK.			◆ Available as part of Seal Kit HM01SK. ✦ Available as part of Seal Kit HM02SK. ❖ Available as part of Seal Kit HM03SK.		
□ Available as part of Body Inner Wall Kit HM01BW.			× Available as part of Coupler and Adaptor Kit HM01AC.		

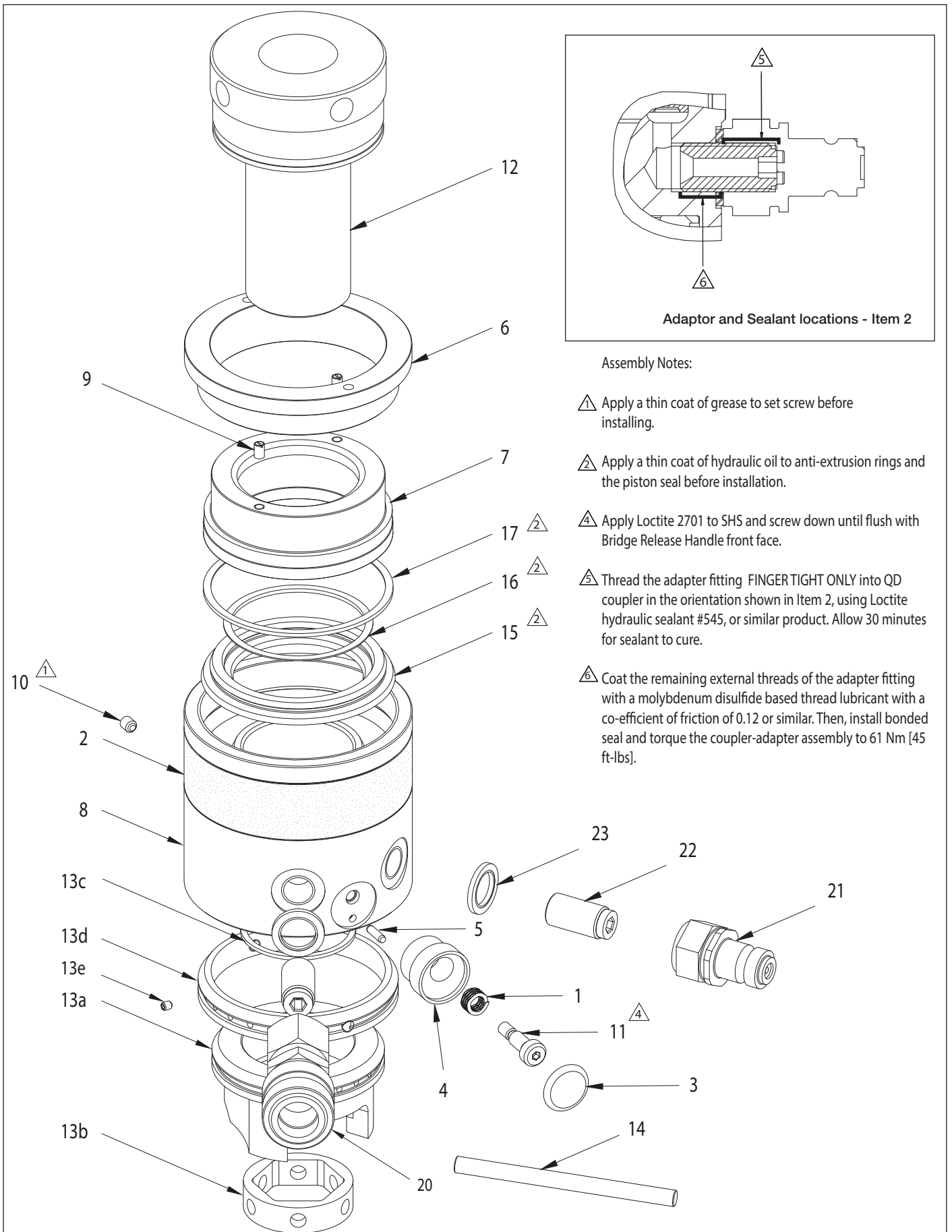


Figure 2, Exploded View, HydraMax® Series Hydraulic Tensioner (Models HM04, HM05)

**Repair Parts List For Figure 2 – HydraMax® Series Hydraulic Tensioner, Models HM04, HM05**

Item	Description	Qty	Part Numbers		
			Model HM04	Model HM05	
1	Wave Spring	1	■	✱	
2	Grip Tape	1	■	✱	
3	Label	1	■	✱	
4	Bridge Release Handle	1	■	✱	
5	Bridge Release Pin	1	■	✱	
6	Stop Ring	1	004AK0002218	004AK0002219	
7	Piston	1	004AB0001967	004AB0001968	
8	Cylinder Body Outer	1	004AA0001952	004AA0001953	
9	Slotted Grub Screw	2	■	✱	
10	Socket Set Screw	1	■	✱	
11	Socket Head Shoulder Screw	1	■	✱	
12	Puller	1	See Table 2, page 13	See Table 2, page 13	
13	Bridge Assembly	1	See Table 2, page 13	See Table 2, page 13	
13a	Bridge	1	See Table 2, page 13	See Table 2, page 13	
13b	Socket	1	See Table 2, page 13	See Table 2, page 13	
13c	Snap Ring	1	See Table 2, page 13	See Table 2, page 13	
13d	Adaptor Ring	1	See Table 2, page 13	See Table 2, page 13	
13e	Socket Set Grub Screw	2	See Table 2, page 13	See Table 2, page 13	
14	Tommy Bar*	1	TBARD10L1650	TBARD10L1650	
15	Seal	1	■ ★	✱ ◐	
16	Seal Inner Back-Up Ring	1	■ ★	✱ ◐	
17	Seal Outer Back-Up Ring	1	■ ★	✱ ◐	
20	Female QD Coupler (Includes Dust Cap)	1	■ †	✱ †	
21	Male QD (Includes Dust Cap)	1	■ †	✱ †	
22	Adaptor	2	■ †	✱ †	
23	Bonded Seal	2	■ †	✱ †	

■ Available as part of Repair Kit HM04RK.

✱ Available as part of Repair Kit HM05RK.

★ Available as part of Seal Kit HM04SK.

◐ Available as part of Seal Kit HM05SK.

† Available as part of Coupler and Adaptor Kit BW-150AW.

\* Some items require additional Tommy Bar required for Socket operation (see table 2, page 15).

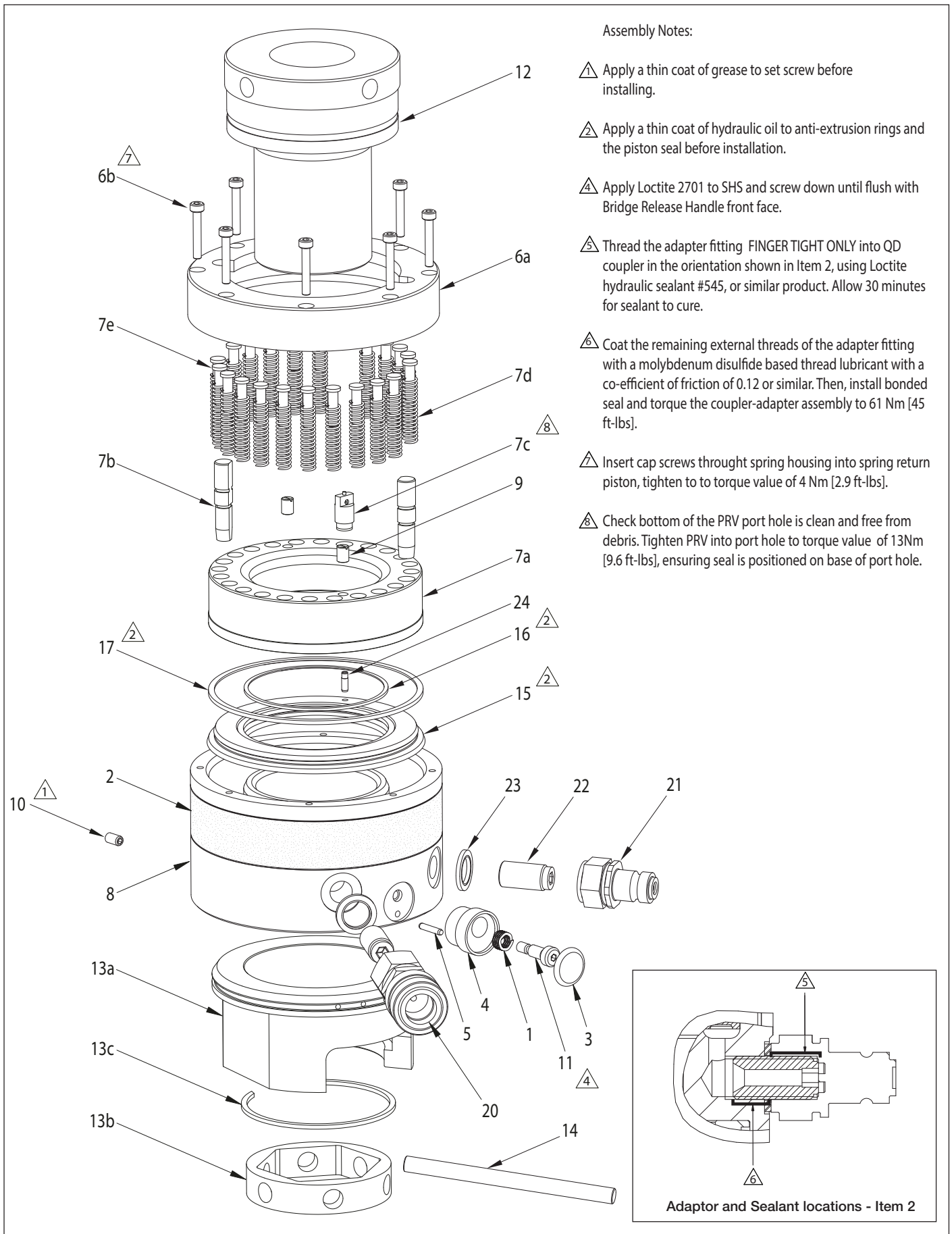


Figure 3, Exploded View, HydraMax® Series Hydraulic Tensioner (Models HM06, HM07)

**Repair Parts List For Figure 3 – HydraMax® Series Hydraulic Tensioner, Models  
HM06, HM07**

Item	Description	Qty	Part Numbers		
			Model HM06	Model HM07	
1	Wave Spring	1	✦	⌘	
2	Grip Tape	1	✦	⌘	
3	Label	1	✦	⌘	
4	Bridge Release Handle	1	✦	⌘	
5	Bridge Release Pin	1	✦	⌘	
6a	Spring Retainer/ Spring Housing	1	⊙	▲	
6b	Socket Head Cap Screw	6/8	⊙	▲	
7a	Piston (Spring Return)	1	▲	◇	
7b	Dowel Pin	2	▲	◇	
7c	Pressure Relief Valve	1	▲	◇	
7d	Compression Spring	17/ 21	▲	◇	
7e	Spring Guide Pin	17/ 21	▲	◇	
8	Cylinder Body Outer	1	004AA0001954	004AA0001955	
9	Slotted Grub Screw	2	✦	⌘	
10	Socket Set Screw	1	✦	⌘	
11	Socket Head Shoulder Screw	1	✦	⌘	
12	Puller	1	See Table 3, page 14	See Table 3, page 14	
13	Bridge Assembly	1	See Table 3, page 14	See Table 3, page 14	
13a	Bridge	1	See Table 3, page 14	See Table 3, page 14	
13b	Socket	1	See Table 3, page 14	See Table 3, page 14	
13c	Snap Ring	1	See Table 3, page 14	See Table 3, page 14	
14	Tommy Bar	1	TBARD10L1650	TBARD10L1650	
15	Seal	1	✦ Δ	⌘ □	
16	Seal Inner Back-Up Ring	1	✦ Δ	⌘ □	
17	Seal Outer Back-Up Ring	1	✦ Δ	⌘ □	
20	Female QD Coupler (Includes Dust Cap)	1	✦ †	⌘ †	
21	Male QD (Includes Dust Cap)	1	✦ †	⌘ †	
22	Adaptor	2	✦ †	⌘ †	
23	Bonded Seal	2	✦ †	⌘ †	
24	Seal Value Tube	1	✦	⌘	

✦ Available as part of Repair Kit HM06RK.

⌘ Available as part of Repair Kit HM07RK.

⊙ Available as part of Spring Retainer Kit HM06SH.

▲ Available as part of Spring Housing Kit HM07SH.

† Available as part of Coupler and Adaptor Kit BW-150AW.

Δ Available as part of Seal Kit HM06SK.

□ Available as part of Seal Kit HM07SK.

▲ Available as part of Piston Spring Return Kit HM06PA.

◇ Available as part of Piston Spring Return Kit HM07PA.

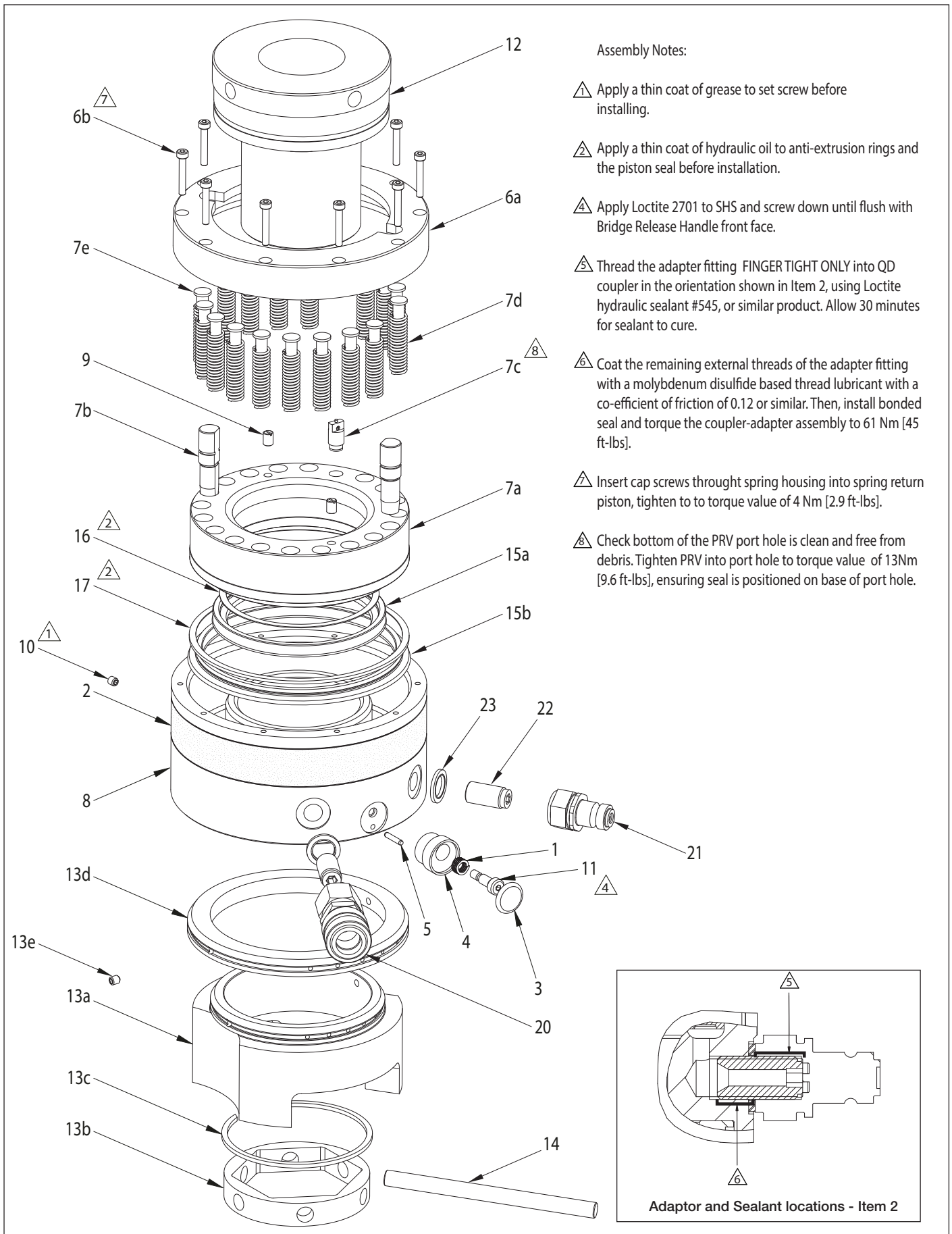


Figure 4, Exploded View, HydraMax® Series Hydraulic Tensioner (Models HM08, HM09, HM10)



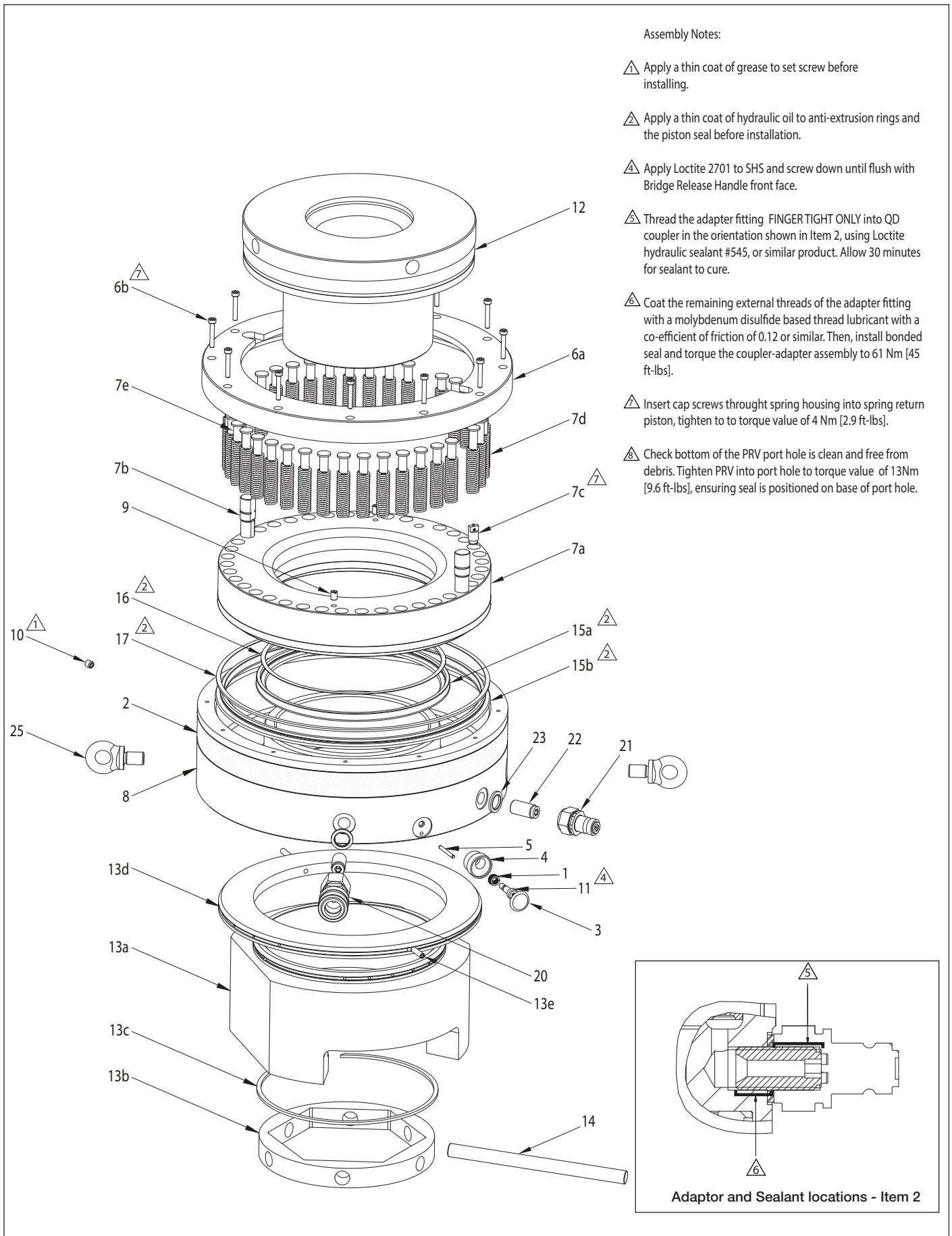
**Repair Parts List For Figure 4 – HydraMax® Series Hydraulic Tensioner, Models  
HM08, HM09, HM10**

Item	Description	Qty	Part Numbers		
			Model HM08	Model HM09	Model HM10
1	Wave Spring	1	▼	⊖	∑
2	Grip Tape	1	▼	⊖	∑
3	Label	1	▼	⊖	∑
4	Bridge Release Handle	1	▼	⊖	∑
5	Bridge Release Pin	1	▼	⊖	∑
6a	Spring Housing	1	◐	◑	⊕
6b	Socket Head Cap Screw	8/ 8/ 10	◐	◑	⊕
7a	Piston (Spring Return)	1	⌘	‡	^
7b	Dowel Pin	2	⌘	‡	^
7c	Pressure Relief Valve	1	⌘	‡	^
7d	Compression Spring	25/ 29/ 17	⌘	‡	^
7e	Spring Guide Pin	25/ 29/ 17	⌘	‡	^
8	Cylinder Body Outer	1	004AA0001956	004AA0001957	004AA0001958
9	Slotted Grub Screw	2	▼	⊖	∑
10	Socket Set Screw	1	▼	⊖	∑
11	Socket Head Shoulder Screw	1	▼	⊖	∑
12	Puller	1	See Table 4, page 15	See Table 4, page 15	See Table 4, page 15
13	Bridge Assembly	1	See Table 4, page 15	See Table 4, page 15	See Table 4, page 15
13a	Bridge	1	See Table 4, page 15	See Table 4, page 15	See Table 4, page 15
13b	Socket	1	See Table 4, page 15	See Table 4, page 15	See Table 4, page 15
13c	Snap Ring	1	See Table 4, page 15	See Table 4, page 15	See Table 4, page 15
13d	Adaptor Ring	1	See Table 4, page 15	See Table 4, page 15	See Table 4, page 15
13e	Socket Set Grub Screw	2	See Table 4, page 15	See Table 4, page 15	See Table 4, page 15
14	Tommy Bar	1	TBARD10L1650	TBARD10L1650	TBARD10L1650
15a	Inner Seal	1	▼✂	⊖⊕	∑✱
15b	Outer Seal	1	▼✂	⊖⊕	∑✱
16	Seal Inner Back-Up Ring	1	▼✂	⊖⊕	∑✱
17	Seal Outer Back-Up Ring	1	▼✂	⊖⊕	∑✱
20	Female QD Coupler (Includes Dust Cap)	1	▼†	⊖†	∑†
21	Male QD (Includes Dust Cap)	1	▼†	⊖†	∑†
22	Adaptor	2	▼†	⊖†	∑†
23	Bonded Seal	2	▼†	⊖†	∑†

▼ Available as part of Repair Kit HM08RK.  
 ⊖ Available as part of Repair Kit HM09RK.  
 ∑ Available as part of Repair Kit HM10RK.  
 ◐ Available as part of Spring Housing Kit HM08SH.  
 ◑ Available as part of Spring Housing Kit HM09SH.  
 ⊕ Available as part of Spring Housing Kit HM10SH.

✂ Available as part of Seal Kit HM08SK.  
 ⊕ Available as part of Seal Kit HM09SK.  
 ✱ Available as part of Seal Kit HM10SK.  
 ⌘ Available as part of Piston Spring Return Kit HM08PA.  
 ‡ Available as part of Piston Spring Return Kit HM09PA.  
 ^ Available as part of Piston Spring Return Kit HM10PA.

† Available as part of Coupler and Adaptor Kit BW-150AW.



**Repair Parts List For Figure 5 – HydraMax® Series Hydraulic Tensioner, Models  
HM11, HM12, HM13**

Item	Description	Qty	Part Numbers		
			Model HM11	Model HM12	Model HM13
1	Wave Spring	1	▲	▲	▽
2	Grip Tape	1	▲	▲	▽
3	Label	1	▲	▲	▽
4	Bridge Release Handle	1	▲	▲	▽
5	Bridge Release Pin	1	▲	▲	▽
6a	Spring Housing	1	)	«	┌
6b	Socket Head Cap Screw	10/ 10/ 12	)	«	┌
7a	Piston (Spring Return)	1	●	≡	§
7b	Dowel Pin	2	●	≡	§
7c	Pressure Relief Valve	1	●	≡	§
7d	Compression Spring	23/ 29/ 27	●	≡	§
7e	Spring Guide Pin	23/ 29 /27	●	≡	§
8	Cylinder Body Outer	1	004AA0001959	004AA0001960	004AA0001961
9	Slotted Grub Screw	2	▲	▲	▽
10	Socket Set Screw	1	▲	▲	▽
11	Socket Head Shoulder Screw	1	▲	▲	▽
12	Puller	1	See Table 5, page 16	See Table 5, page 16	See Table 5, page 16
13	Bridge Assembly	1	See Table 5, page 16	See Table 5, page 16	See Table 5, page 16
13a	Bridge	1	See Table 5, page 16	See Table 5, page 16	See Table 5, page 16
13b	Socket	1	See Table 5, page 16	See Table 5, page 16	See Table 5, page 16
13c	Snap Ring	1	See Table 5, page 16	See Table 5, page 16	See Table 5, page 16
13d	Adaptor Ring	1	See Table 5, page 16	See Table 5, page 16	See Table 5, page 16
13e	Socket Set Grub Screw	2	See Table 5, page 16	See Table 5, page 16	See Table 5, page 16
14	Tommy Bar*	1	TBARD14L2300	TBARD14L2300	TBARD14L2300
15a	Inner Seal	1	▲○	▲◇	▽*
15b	Outer Seal	1	▲○	▲◇	▽*
16	Seal Inner Back-Up Ring	1	▲○	▲◇	▽*
17	Seal Outer Back-Up Ring	1	▲○	▲◇	▽*
20	Female QD Coupler (Includes Dust Cap)	1	▲†	▲†	▽†
21	Male QD (Includes Dust Cap)	1	▲†	▲†	▽†
22	Adaptor	2	▲†	▲†	▽†
23	Bonded Seal	2	▲†	▲†	▽†
25	Eye Bolt	2	▲	▲	▽

▲ Available as part of Repair Kit HM11RK.

▲ Available as part of Repair Kit HM12RK.

▽ Available as part of Repair Kit HM13RK.

) Available as part of Spring Housing Kit HM11SH.

« Available as part of Spring Housing Kit HM12SH.

┌ Available as part of Spring Housing Kit HM13SH.

○ Available as part of Seal Kit HM11SK.

◇ Available as part of Seal Kit HM12SK.

\* Available as part of Seal Kit HM13SK.

● Available as part of Piston Spring Return Kit HM11PA.

≡ Available as part of Piston Spring Return Kit HM12PA.

§ Available as part of Piston Spring Return Kit HM13PA.

† Available as part of Coupler and Adaptor Kit BW-150AW.

\* Some items require additional Tommy Bar required for Socket operation (see table 5, page 16).

**Repair Parts List For Figure 5 – HydraMax® Series Hydraulic Tensioner, Models  
HM14, HM15**

Item	Description	Qty	Part Numbers		
			Model HM14	Model HM15	
1	Wave Spring	1	◀	▶	
2	Grip Tape	1	◀	▶	
3	Label	1	◀	▶	
4	Bridge Release Handle	1	◀	▶	
5	Bridge Release Pin	1	◀	▶	
6a	Spring Housing	1	X	Φ	
6b	Socket Head Cap Screw	12/ 12	X	Φ	
7a	Piston (Spring Return)	1	☒	Π	
7b	Dowel Pin	2	☒	Π	
7c	Pressure Relief Valve	1	☒	Π	
7d	Compression Spring	33/ 37	☒	Π	
7e	Spring Guide Pin	33/ 37	☒	Π	
8	Cylinder Body Outer	1	004AA0001962	004AA0001963	
9	Slotted Grub Screw	2	◀	▶	
10	Socket Set Screw	1	◀	▶	
11	Socket Head Shoulder Screw	1	◀	▶	
12	Puller	1	See Table 6, page 17	See Table 6, page 17	
13	Bridge Assembly	1	See Table 6, page 17	See Table 6, page 17	
13a	Bridge	1	See Table 6, page 17	See Table 6, page 17	
13b	Socket	1	See Table 6, page 17	See Table 6, page 17	
13c	Snap Ring	1	See Table 6, page 17	See Table 6, page 17	
13d	Adaptor Ring	1	See Table 6, page 17	See Table 6, page 17	
13e	Socket Set Grub Screw	2	See Table 6, page 17	See Table 6, page 17	
14	Tommy Bar	1	TBARD14L2300	TBARD14L2300	
15a	Inner Seal	1	◀>	▶<	
15b	Outer Seal	1	◀>	▶<	
16	Seal Inner Back-Up Ring	1	◀>	▶<	
17	Seal Outer Back-Up Ring	1	◀>	▶<	
20	Female QD Coupler (Includes Dust Cap)	1	◀ †	▶ †	
21	Male QD (Includes Dust Cap)	1	◀ †	▶ †	
22	Adaptor	2	◀ †	▶ †	
23	Bonded Seal	2	◀ †	▶ †	
25	Eye Bolt	2	◀	▶	
◀ Available as part of Repair Kit HM14RK. ▶ Available as part of Repair Kit HM15RK. X Available as part of Spring Housing Kit HM14SH. ☒ Available as part of Spring Housing Kit HM15SH.			> Available as part of Seal Kit HM14SK. < Available as part of Seal Kit HM15SK. ☒ Available as part of Piston Spring Return Kit HM14PA. Π Available as part of Piston Spring Return Kit HM15PA.		
† Available as part of Coupler and Adaptor Kit BW-150AW.					

Table 1 - Adaptor Kits, Models HM01, HM02 and HM03.				
Series and Size			Part Number	
Series	inch	mm	Puller (Fig. 1, item 12)	Bridge Assembly (Fig. 1, item 13)
HM01	3/4" 10 UNC		C0104A0012AC	C0113A0012XX
		M20 x 2.5	C0104AM020AY	C0113AM020XX
HM02	3/4" 10 UNC		C0104B0012AC	C0113B0012XX
	7/8" 9 UNC		C0104B0014AC	C0113B0014XX
		M20 x 2.5	C0104BM020AY	C0113BM020XX
		M22 x 2.5	C0104BM022AY	C0113B0012XX
HM03	3/4" 10 UNC		C0104C0012AC	C0113C0012XX
	7/8" 9 UNC		C0104C0014AC	C0113C0014XX
	1" 8 UNC		C0104C0100AF	C0113C0100XX
		M20 x 2.5	C0104CM020AY	C0113CM020XX
		M22 x 2.5	C0104CM022AY	C0113C0012XX
		M24 x 3.0	C0104CM024AZ	C0113C0014XX

Bridge Assembly contains Bridge (1), Socket (1), Snap Ring (1).

Table 2 - Adaptor Kits, Models HM04, and HM05.				
Series and Size			Part Number	
Series	inch	mm	Puller (Fig. 2, item 12)	Bridge Assembly (Fig. 1, item 13)
HM04	7/8" 9 UNC		C0104D0014AC	C0113D0014XX *
	1" 8 UNC		C0104D0100AF	C0113D0100XX *
	1.1/8" 8UN		C0104D0102AF	C0113D0102XX
		M22 x 2.5	C0104DM022AY	C0113D0012XX ★ *
		M24 x 3.0	C0104DM024AZ	C0113D0014XX *
		M27 x 3.0	C0104DM027AZ	C0113D0100XX *
		M30 x 3.5	C0104DM030BA	C0113D0102XX
HM05	1" 8 UNC		C0104E0100AF	C0113D0100XX *
	1.1/8" 8UN		C0104E0102AF	C0113D0102XX
	1 1/4" 8UN		C0104E0104AF	C0113E0104XX
		M24 x 3.0	C0104EM024AZ	C0113D0014XX *
		M27 x 3.0	C0104EM027AZ	C0113D0100XX *
		M30 x 3.5	C0104EM030BA	C0113D0102XX
	M33 x 3.5	C0104EM033BA	C0113E0104XX	

Bridge Assembly contains Bridge (1), Socket (1), Snap Ring (1).

★ Assembly includes Adaptor Ring, Socket Set Grub Screw.

\* Requires additional Tommy Bar for Socket operation.  
Part number: TBARD06L1650.

Table 3 - Adaptor Kits, Models HM06 and HM07.				
Series and Size			Part Number	
Series	inch	mm	Puller (Fig. 3, item 12)	Bridge Assembly (Fig. 3, item 13)
HM06	1.1/8" 8UN	-	C0104F0102AF	C0113F0102XX
	1.1/4" 8UN	-	C0104F0104AF	C0113F0104XX
	1.3/8" 8UN	-	C0104F0106AF	C0113F0106XX
	1.1/2" 8UN	-	C0104F0108AF	C0113F0108XX
	-	M30 x 3.5	C0104FM030BA	C0113F0102XX
	-	M33 x 3.5	C0104FM033BA	C0113F0104XX
	-	M36 x 4.0	C0104FM036BB	C0113F0106XX
	-	M39 x 4.0	C0104FM039BB	C0113F0108XX
HM07	1.1/4" 8UN	-	C0104G0104AF	C0113F0104XX
	1.3/8" 8UN	-	C0104G0106AF	C0113F0106XX
	1.1/2" 8UN	-	C0104G0108AF	C0113F0108XX
	1.5/8" 8UN	-	C0104G0110AF	C0113G0110XX
	-	M33 x 3.5	C0104GM033BA	C0113F0104XX
	-	M36 x 4.0	C0104GM036BB	C0113F0106XX
	-	M39 x 4.0	C0104GM039BB	C0113F0108XX
	-	M42 x 4.5	C0104GM042BC	C0113G0110XX
Bridge Assembly contains Bridge (1), Socket (1), Snap Ring (1).				

Table 4 - Adaptor Kits, Models HM08, HM09 and HM10.				
Series and Size			Part Number	
Series	inch	mm	Puller (Fig. 4, item 12)	Bridge Assembly (Fig. 4, item 13)
HM08	1.3/8" 8UN	-	C0104H0106AF	C0113F0106XX
	1.1/2" 8UN	-	C0104H0108AF	C0113F0108XX
	1.5/8" 8UN	-	C0104H0110AF	C0113G0110XX
	1.3/4" 8UN	-	C0104H0112AF	C0113H0112XX
	-	M36 x 4.0	C0104HM036BB	C0113F0106XX,
	-	M39 x 4.0	C0104HM039BB	C0113F0108XX
	-	M42 x 4.5	C0104HM042BC	C0113G0110XX,
	-	M45 x 4.5	C0104HM045BC	C0113H0112XX
HM09	1.1/2" 8UN	-	C0104J0108AF	C0113J0108XX
	1.5/8" 8UN	-	C0104J0110AF	C0113J0110XX
	1.3/4" 8UN	-	C0104J0112AF	C0113J0112XX ★
	1.7/8" 8UN	-	C0104J0114AF	C0113J0114XX
	-	M39 x 4.0	C0104JM039BB	C0113J0108XX
	-	M42 x 4.5	C0104JM042BC	C0113J0110XX
	-	M45 x 4.5	C0104JM045BC	C0113J0112XX ★
	-	M48 x 5.0	C0104JM048BD	C0113J0114XX
HM10	1.5/8" 8UN		C0104K0110AF	C0113J0110XX
	1.3/4" 8UN	-	C0104K0112AF	C0113J0112XX ★
	1.7/8" 8UN	-	C0104K0114AF	C0113J0114XX
	2" 8UN	-	C0104K0200AF	C0113K0200XX
	-	M42 x 4.5	C0104KM042BC	C0113J0110XX
	-	M45 x 4.5	C0104KM045BC	C0113J0112XX ★
	-	M48 x 5.0	C0104KM048BD	C0113J0114XX
	-	M52 x 5.0	C0104KM052BD	C0113K0200XX
Bridge Assembly contains Bridge (1), Socket (1), Snap Ring (1).				
★ Assembly includes Adaptor Ring, Socket Set Grub Screw.				

Table 5 - Adaptor Kits, Models HM11, HM12 and HM13.				
Series and Size			Part Number	
Series	inch	mm	Puller (Fig. 5, item 12)	Bridge Assembly (Fig. 5, item 13)
HM11	1.3/4" 8UN	-	C0104M0112AF	C0113J0112XX★*
	1.7/8" 8UN	-	C0104M0114AF	C0113J0114XX*
	2" 8UN	-	C0104M0200AF	C0113K0200XX*
	2.1/4" 8UN	-	C0104M0204AF	C0113M0204XX
	-	M45 x 4.5	C0104MM045BC	C0113J0112XX★*
	-	M48 x 5.0	C0104MM048BD	C0113J0114XX*
	-	M52 x 5.0	C0104MM052BD	C0113K0200XX*
	-	M56 x 5.5	C0104MM056BE	C0113MM056XX
-	M60 x 5.5	C0104MM060BE	C0113MM060XX	
HM12	1.7/8" 8UN	-	C0104N0114AF	C0113J0114XX*
	2" 8UN	-	C0104N0200AF	C0113K0200XX*
	2.1/4" 8UN	-	C0104N0204AF	C0113M0204XX
	2.1/2" 8UN	-	C0104N0208AF	C0113N0208XX
	-	M48 x 5.0	C0104NM048BD	C0113J0114XX*
	-	M52 x 5.0	C0104NM052BD	C0113K0200XX*
	-	M56 x 5.5	C0104NM056BE	C0113MM056XX
	-	M60 x 5.5	C0104NM060BE	C0113MM060XX
-	M64 x 6.0	C0104NM064BF	C0113NM064XX	
HM13	2.1/2" 8UN	-	C0104P0208AF	C0113P0208XX★
	2.3/4" 8UN	-	C0104P0212AF	C0113P0212XX
	3" 8UN	-	C0104P0300AF	C0113P0300XX
	-	M64 x 6.0	C0104PM064BF	C0113PM064XX★
	-	M68 x 6.0	C0104PM068BF	C0113PM068XX★
	-	M72 x 6.0	C0104PM072BF	C0113PM072XX
	-	M76 x 6.0	C0104PM076BF	C0113PM076XX
Bridge Assembly contains Bridge (1), Socket (1), Snap Ring (1).				
★ Assembly includes Adaptor Ring, Socket Set Grub Screw.				
* Requires additional Tommy Bar for Socket operation. Part number: TBARD10L1650.				



Table 6 - Adaptor Kits, Models HM14 and HM15.				
Series and Size			Part Number	
Series	inch	mm	Puller (Fig. 5, item 12)	Bridge Assembly (Fig. 5, item 13)
HM14	3" 8UN	-	C0104R0300AF	C0113P0300XX
	3.1/4" 8UN	-	C0104R0304AF	C0113R0304XX
	3.1/2" 8UN	-	C0104R0308AF	C0113R0308XX
	-	M72 x 6.0	C0104RM072BF	C0113PM072XX
	-	M76 x 6.0	C0104RM076BF	C0113PM076XX
	-	M80 x 6.0	C0104RM080BF	C0113RM080XX
	-	M85 x 6.0	C0104RM085BF	C0113RM085XX
	-	M90 x 6.0	C0104RM090BF	C0113RM090XX
HM15	3.1/2" 8UN	-	C0104S0308AF	C0113S0308XX ★
	3.3/4" 8UN	-	C0104S0312AF	C0113S0312XX
	4" 8UN	-	C0104S0400AF	C0113S0400XX
	-	M90 x 6.0	C0104SM090BF	C0113SM090XX ★
	-	M95 x 6.0	C0104SM095BF	C0113SM095XX
	-	M100 x 6.0	C0104SM100BF	C0113SM100XX
Bridge Assembly contains Bridge (1), Socket (1), Snap Ring (1).				
★ Assembly includes Adaptor Ring, Socket Set Grub Screw.				







<http://www.enerpac.com>